



Shown in Contemporary elevation

Omega

2192 sq. ft.

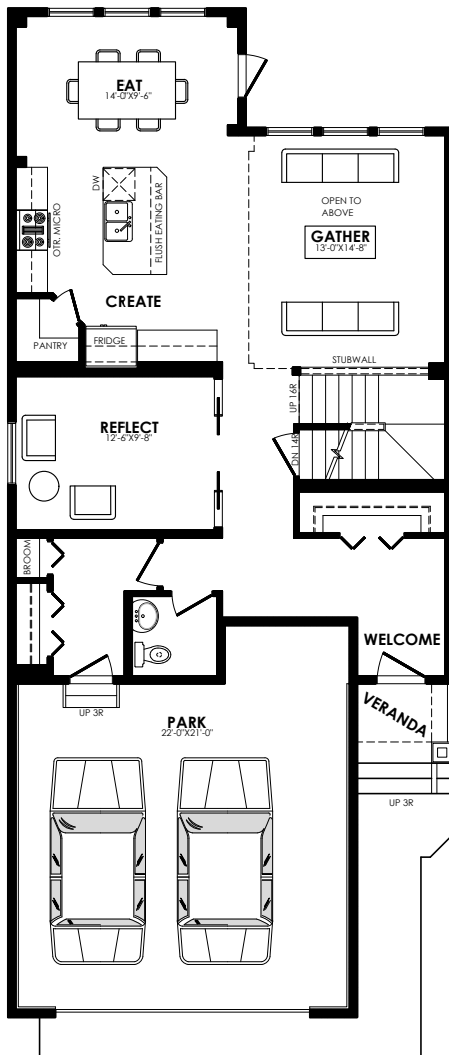
Prestige Specification

Specs

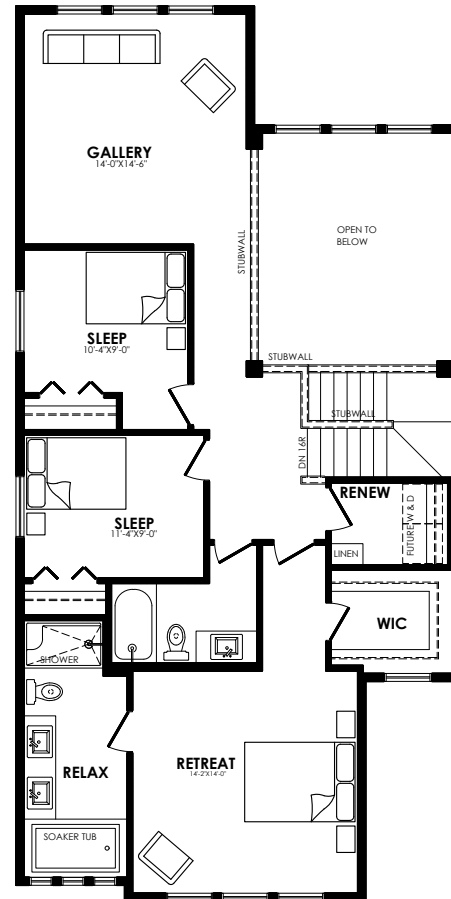
| | |
|-----------------|--------------|
| Width of House | 28 ft. |
| Main Floor | 1064 sq. ft. |
| Second Floor | 1128 sq. ft. |
| Maximum Living® | 859 sq. ft. |

Details

| | |
|-----------|------------------------|
| Style | 2 Storey Single Family |
| Bedrooms | 3 |
| Bathrooms | 2.5 |
| Garage | Double 22' x 21' |



Main floor plan



Second floor plan

Omega options



Contemporary



Craftsman

Elevation options

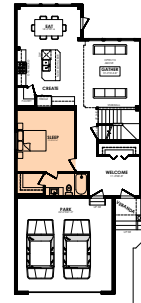
Square footage, layout options and window locations may change with elevation changes.



Large mudroom

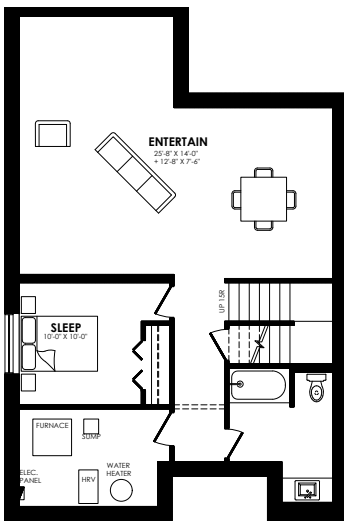


3-piece bathroom



Main floor bedroom

Main floor options



MaXimum living®
you've got it so use it

Maximum living® option



Rear Master



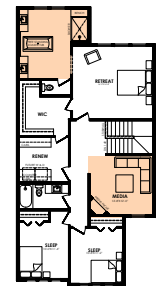
Rear Master with walk-through closet



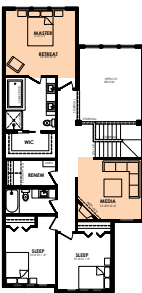
Rear Master with Large Closet



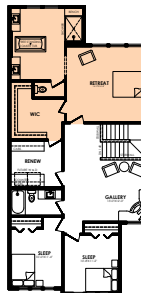
Rear Master with 4th Bedroom



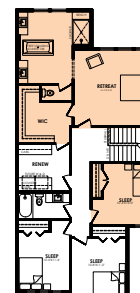
Rear Master with Media Room



Rear Master with Media Room & Fireplace



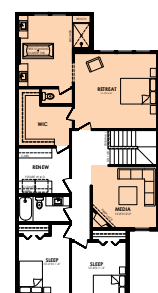
Master Suite



Master Suite with 4th Bedroom



Master Suite with Media Room



Master Suite with Media Room & Fireplace

Second floor options

Home Price

(including house, lot and GST) Lot no. _____

Please note that elevations and renderings are a guideline only. Architectural requirements or restrictions may differ per subdivision. Exterior upgrade options are available.

