

# Callisto 30'

2258 sq. ft.

Pinnacle Specification



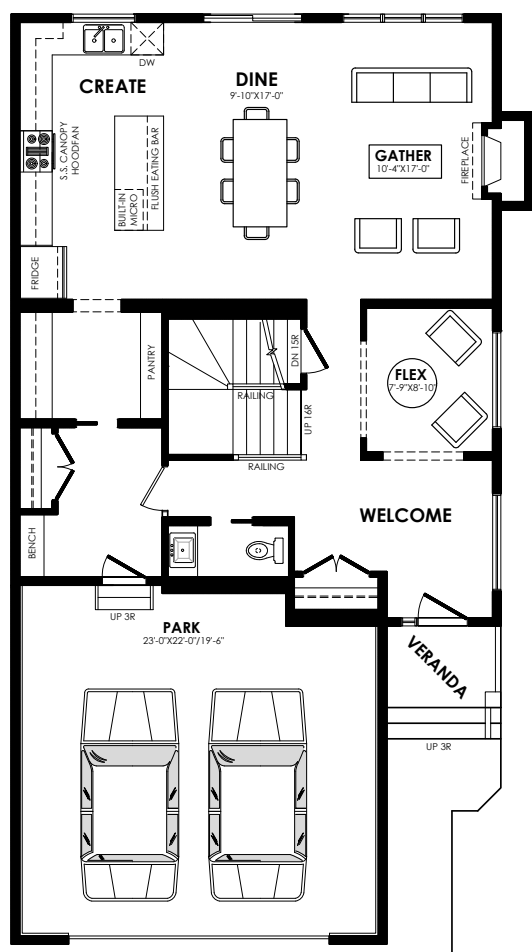
Shown in Contemporary elevation

## Specs

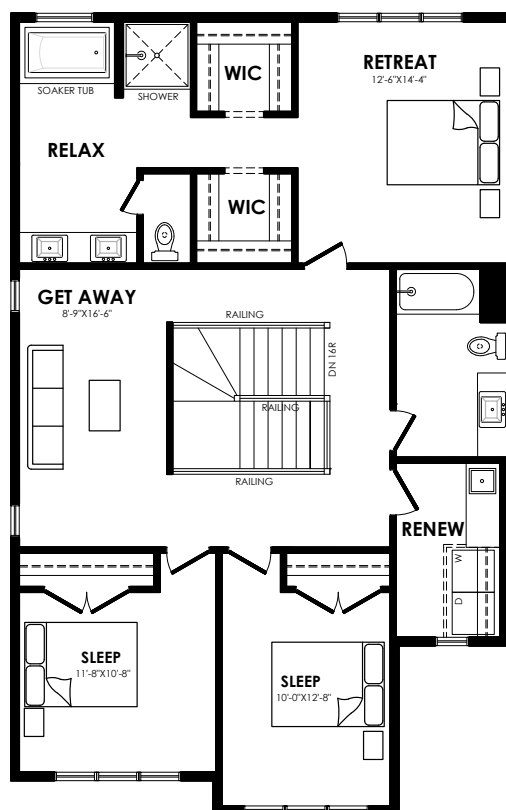
|                 |              |
|-----------------|--------------|
| Width of House  | 30 ft.       |
| Main Floor      | 1095 sq. ft. |
| Second Floor    | 1331 sq. ft. |
| Maximum Living® | 875 sq. ft.  |

## Details

|           |                           |
|-----------|---------------------------|
| Style     | 2 Storey Single Family    |
| Bedrooms  | 3                         |
| Bathrooms | 2.5                       |
| Garage    | Double 23' x 22' / 19'-6" |



Main floor plan



Second floor plan

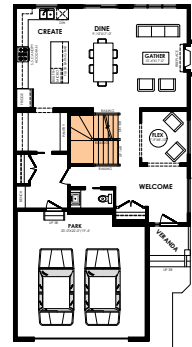
# Castillo 30' options



Craftsman      Prairie      Modern      Contemporary

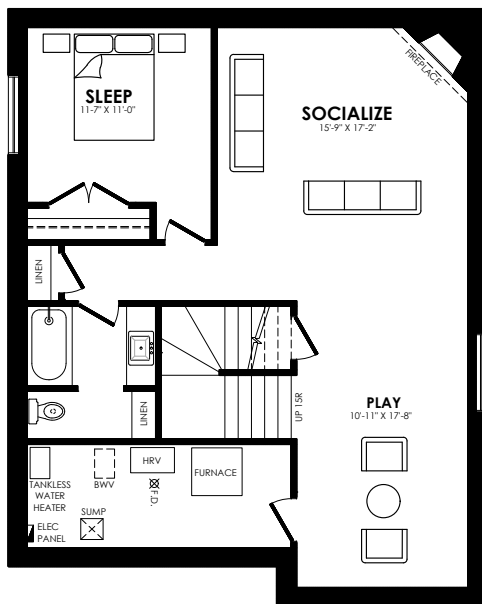
## Elevation options

Square footage, layout options and window locations may change with elevation changes.



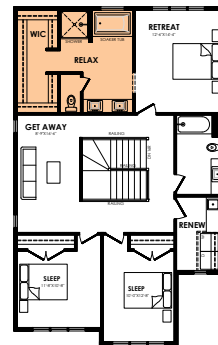
Main floor finished basement stairwell

## Main floor option

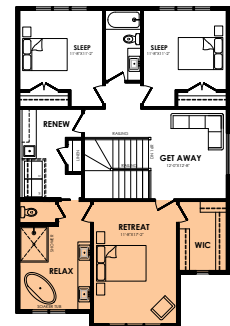


**MaXimum living®**  
you've got it so use it

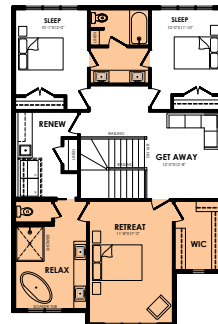
## Maximum living® option



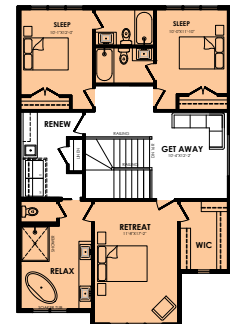
Flipped WIC & ensuite



Front Master



Front Master w/ Jack n' Jill



Front Master w/3 bed, 3 bath

## Second floor options

Home Price  
(including house, lot and GST) Lot no. \_\_\_\_\_

Please note that elevations and renderings are a guideline only. Architectural requirements or restrictions may differ per subdivision. Exterior upgrade options are available.