



Shown in customized Standard elevation

Archer

2181 sq. ft.

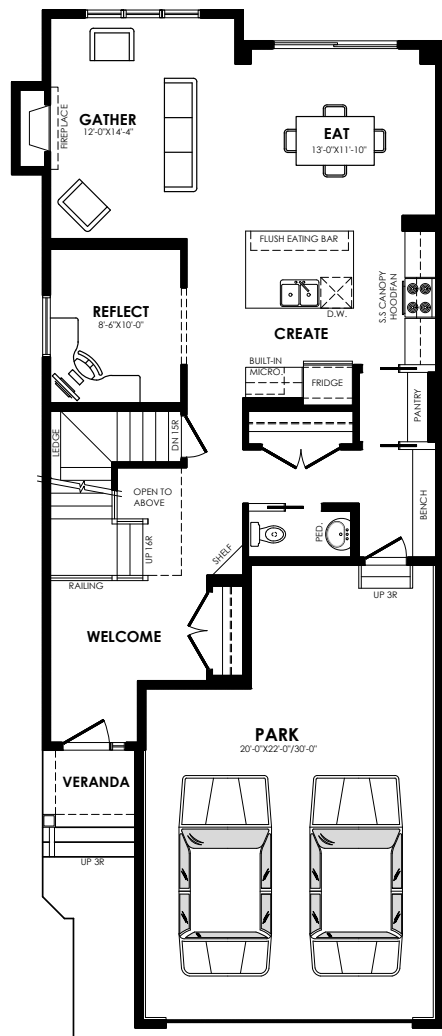
Pinnacle Specification

Specs

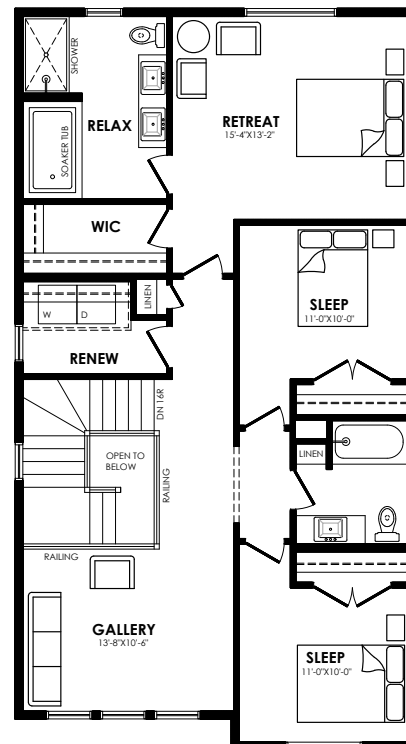
Width of House	26 ft.
Main Floor	1057 sq. ft.
Second Floor	1124 sq. ft.
Maximum Living®	865 sq. ft.

Details

Style	2 Storey Single Family
Bedrooms	3
Bathrooms	2.5
Garage	Double 20' x 22' / 30'

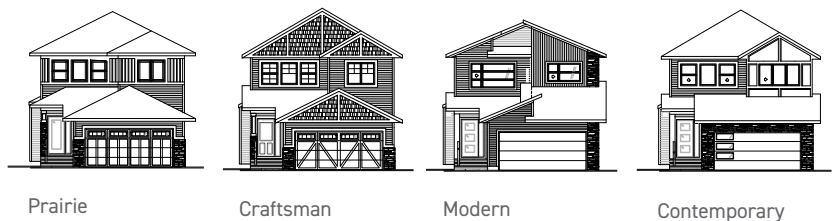


Main floor plan



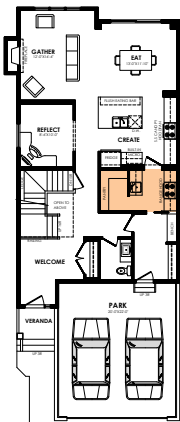
Second floor plan

Archer options



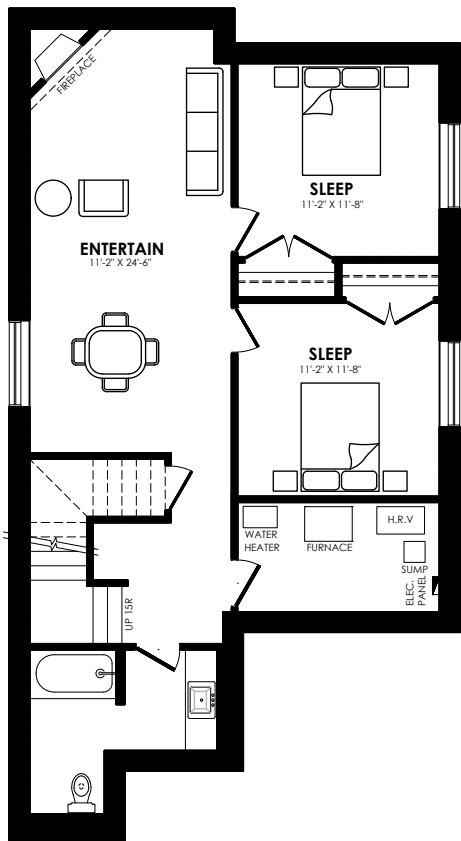
Elevation options

Square footage, layout options and window locations may change with elevation changes.



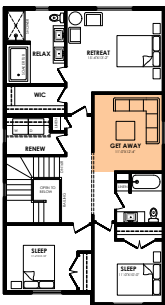
Spice kitchen

Main floor option

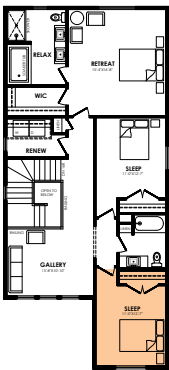


MaXimum living®
 you've got it so use it

Maximum living® option



Middle
bonus room



Extended second
floor



Front master suite
with middle bonus
room

Second floor options

Home Price
 (including house, lot and GST) Lot no. _____

Please note that elevations and renderings are a guideline only. Architectural requirements or restrictions may differ per subdivision. Exterior upgrade options are available.





Shown in customized Standard elevation

Archer

2169 sq. ft.

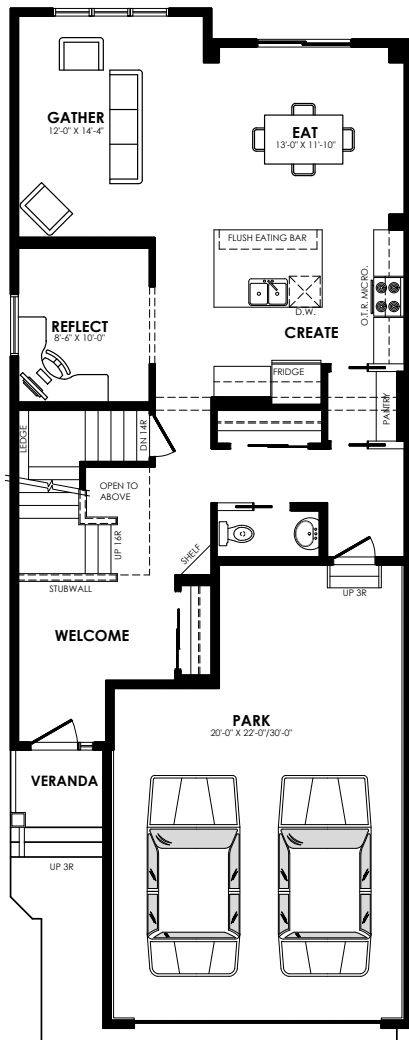
Prestige Specification

Specs

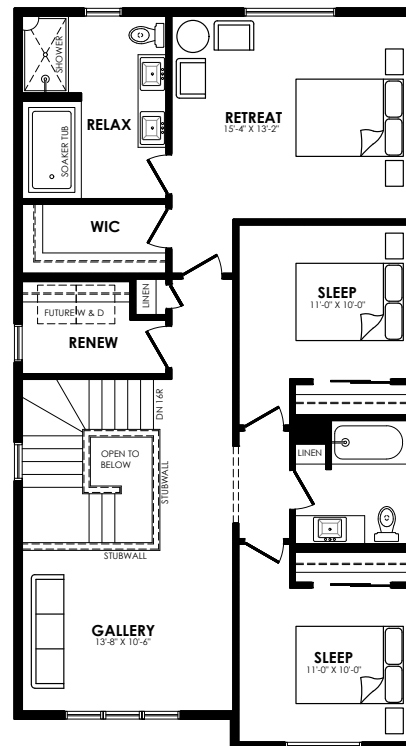
Width of House	26 ft.
Main Floor	1045 sq. ft.
Second Floor	1124 sq. ft.
Maximum Living*	865 sq. ft.

Details

Style	2 Storey Single Family
Bedrooms	3
Bathrooms	2.5
Garage	Double 20' x 22' / 30'



Main floor plan



Second floor plan

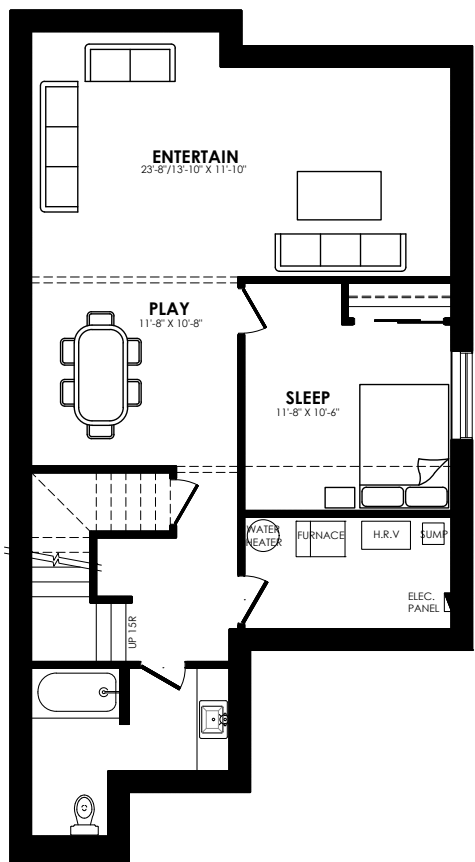
Archer options



Prairie Craftsman Modern Contemporary

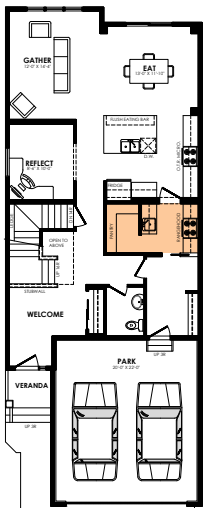
Elevation options

Square footage, layout options and window locations may change with elevation changes.



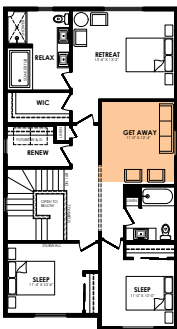
MaXimum living®
you've got it so use it

Maximum living® option

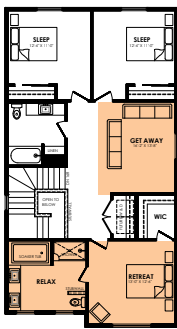


Spice kitchen

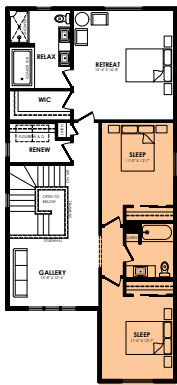
Main floor option



Middle
bonus room



Front master suite
with middle bonus
room



Extended Second
floor

Second floor options

Home Price
(including house, lot and GST) Lot no. _____

Please note that elevations and renderings are a guideline only. Architectural requirements or restrictions may differ per subdivision. Exterior upgrade options are available.

