



Shown in Modern elevation

# Cyrus

2290 sq. ft.

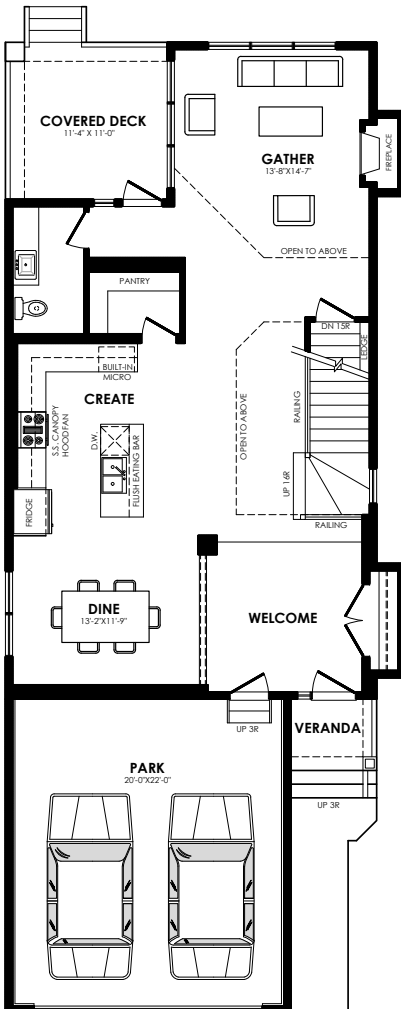
## Pinnacle Specification

### Specs

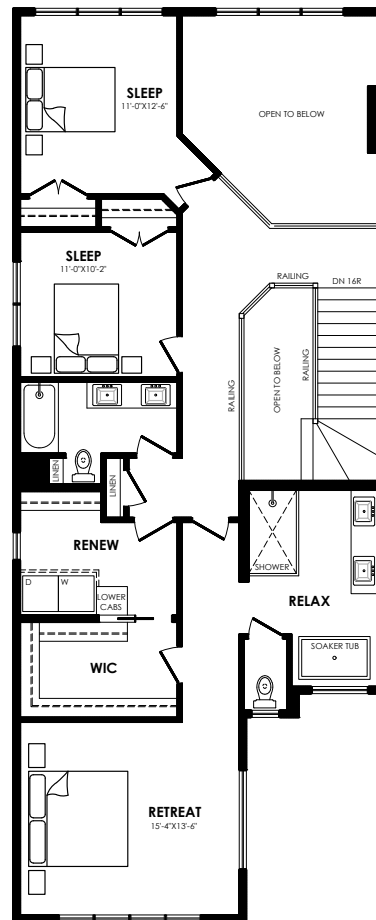
Width of House	26 ft.
Main Floor	1099 sq. ft.
Second Floor	1191 sq. ft.
Maximum Living®	798 sq. ft.

### Details

Style	2 Storey Single Family
Bedrooms	3
Bathrooms	2.5
Garage	Double 20' x 22'



Main floor plan



Second floor plan

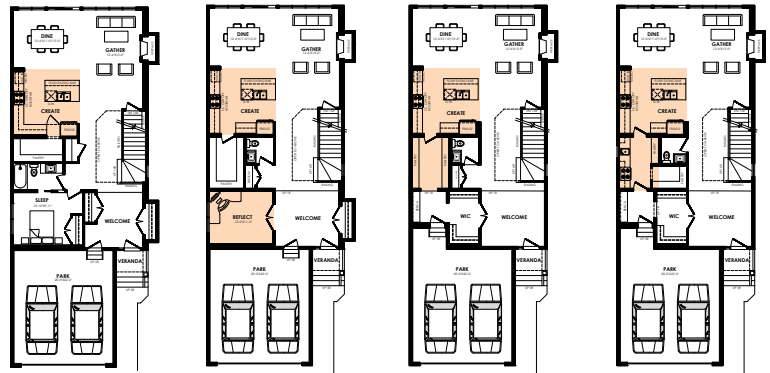
# Cyrus options



Prairie      Modern      Craftsman      Contemporary

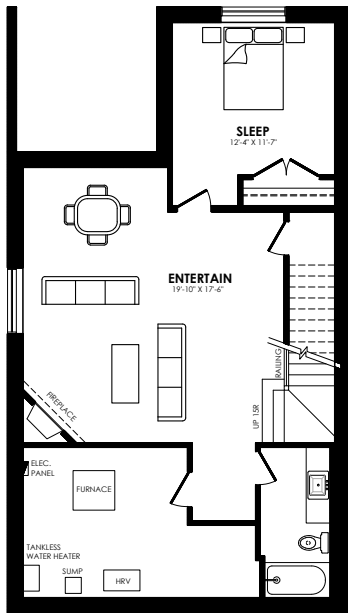
## Elevation options

Square footage, layout options and window locations may change with elevation changes.



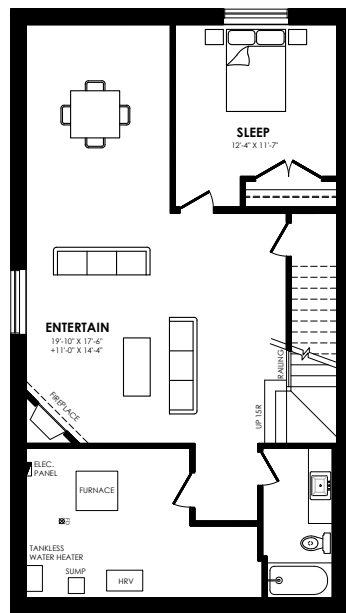
Center Kitchen      Center Kitchen with Den      Center Kitchen with Walk-thru Pantry      Center Kitchen with Spice Kitchen

## Main floor options

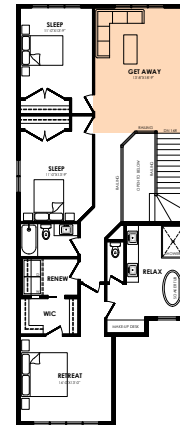


**MaXimum living<sup>®</sup>**  
you've got it so use it

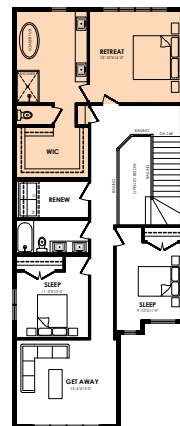
## Maximum living<sup>®</sup> option



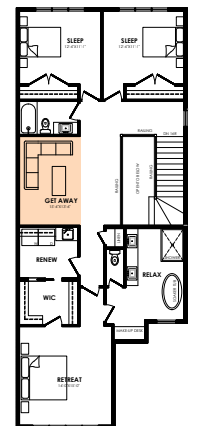
Extended Maximum Living



Rear Bonus Room



Rear Master



Centre Bonus Room

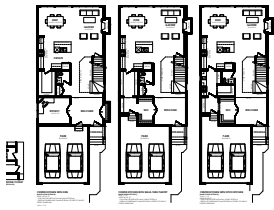
## Second floor options

Home Price  
(including house, lot and GST) Lot no. \_\_\_\_\_

Please note that elevations and renderings are a guideline only. Architectural requirements or restrictions may differ per subdivision. Exterior upgrade options are available.



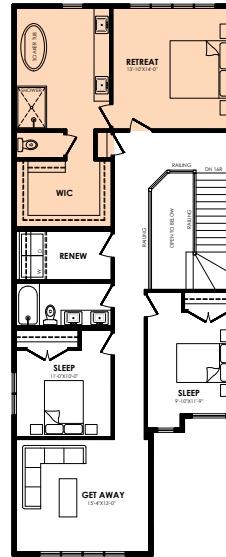
# Cyrus options



Standard

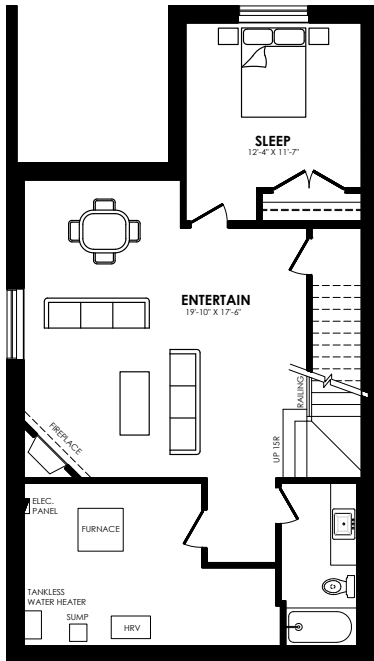
## Elevation option

Square footage, layout options and window locations may change with elevation changes.



Alternate Second Floor  
Rear Master

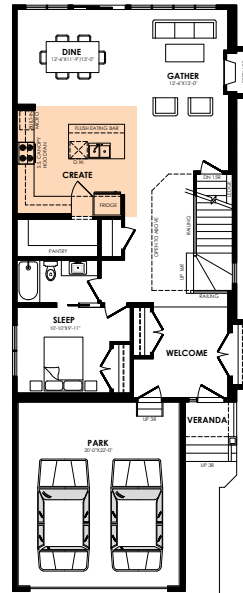
## Second Floor option



**MaXimum living**<sup>®</sup>

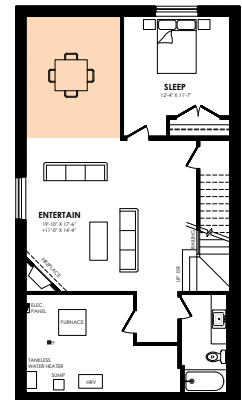
you've got it so use it

## Maximum living<sup>®</sup> option



Alternate Main Floor  
Centre Kitchen

## Main Floor option



Extended Max Living

## Max Living option

Home Price  
(including house, lot and GST) Lot no. \_\_\_\_\_

Please note that elevations and renderings are a guideline only. Architectural requirements or restrictions may differ per subdivision. Exterior upgrade options are available.





Shown in Standard elevation

# Cyrus

2278 sq. ft.

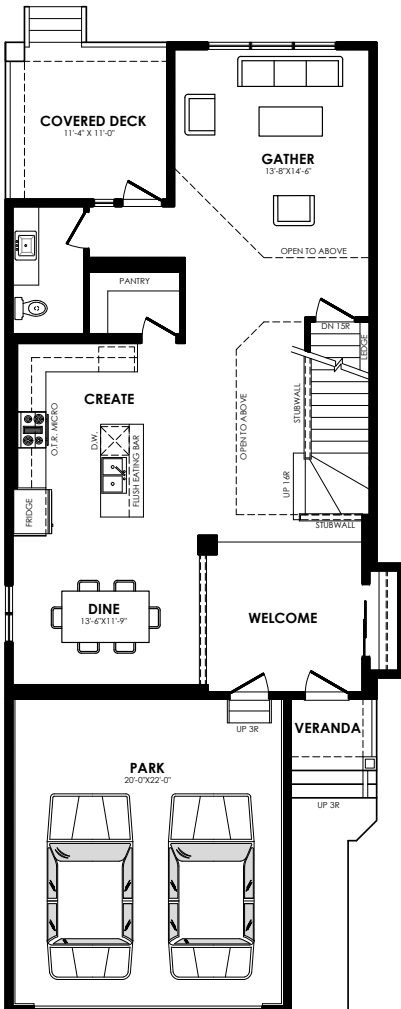
Prestige Specification

## Specs

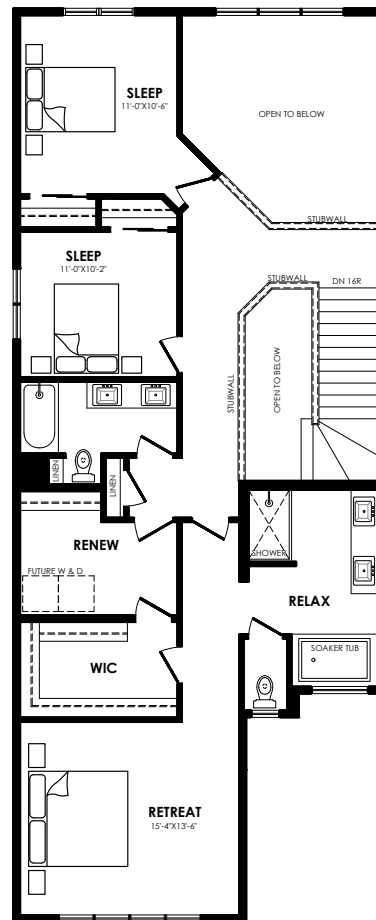
Width of House	26 ft.
Main Floor	1087 sq. ft.
Second Floor	1191 sq. ft.
Maximum Living <sup>®</sup>	798 sq. ft.

## Details

Style	2 Storey Single Family
Bedrooms	3
Bathrooms	2.5
Garage	Double 20' x 22'



Main floor plan



Second floor plan

# Cyrus options



Prairie



Craftsman



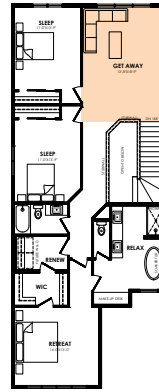
Modern



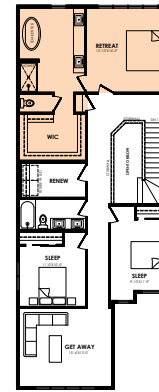
Contemporary

## Elevation options

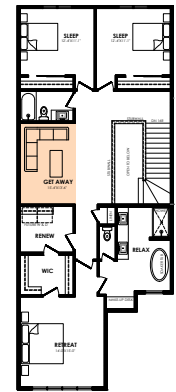
Square footage, layout options and window locations may change with elevation changes.



Rear Bonus Room

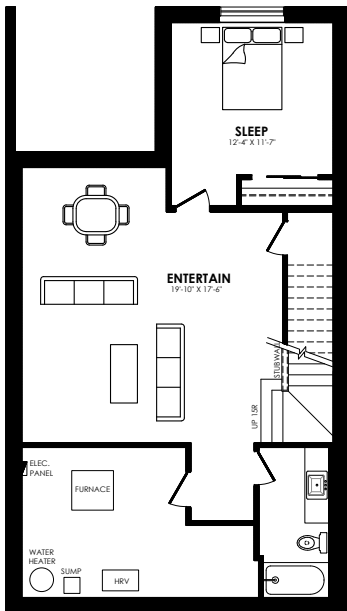


Rear Master



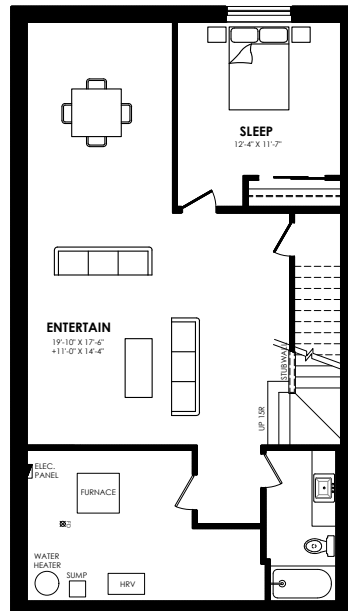
Centre Bonus Room

## Second floor options



**MaXimum living<sup>®</sup>**  
you've got it so use it

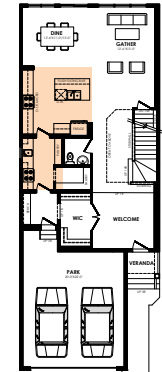
Maximum living<sup>®</sup> option



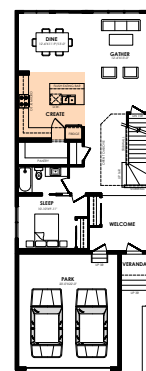
Extended Maximum Living Option



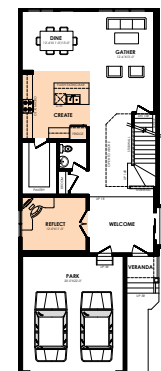
Center Kitchen with Walk-thru Pantry



Center Kitchen with Spice Kitchen



Center Kitchen



Center Kitchen with Den

## Main floor options

### Home Price

(including house, lot and GST) Lot no. \_\_\_\_\_

Please note that elevations and renderings are a guideline only. Architectural requirements or restrictions may differ per subdivision. Exterior upgrade options are available.

