



Shown in Contemporary elevation

Lyra

2258 sq. ft. Zero Lot Line

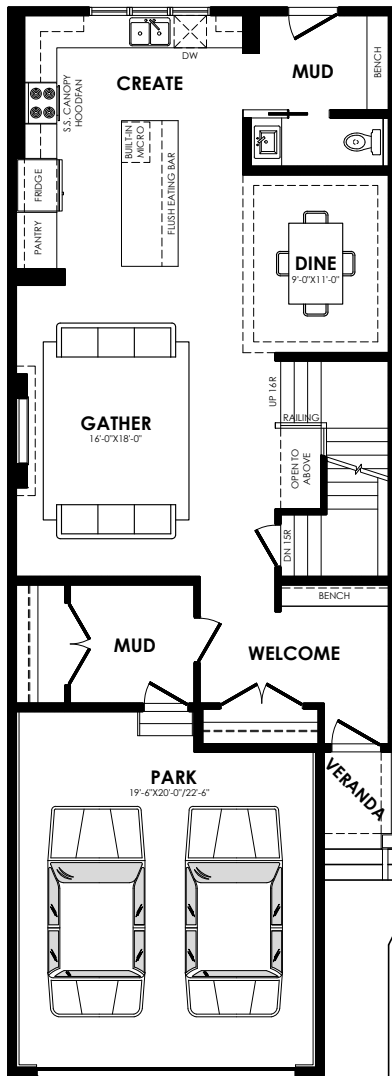
Pinnacle Specification

Specs

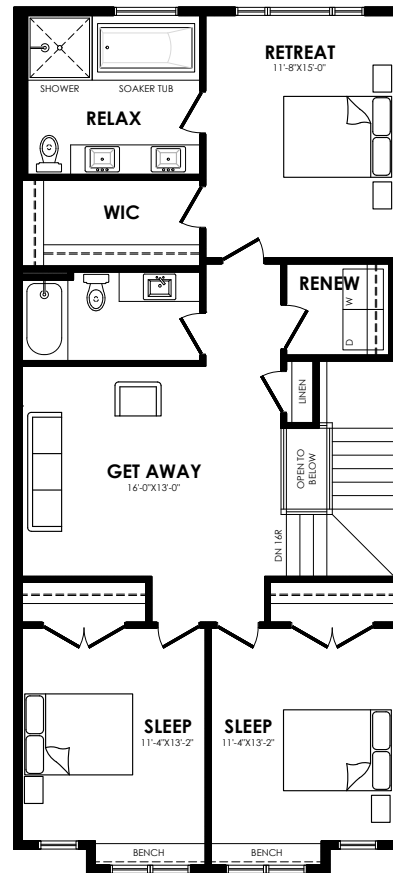
Width of House	24 ft.
Main Floor	1075 sq. ft.
Second Floor	1183 sq. ft.
Maximum Living®	757 sq. ft.

Details

Style	2 Storey Single Family
Bedrooms	3
Bathrooms	2.5
Garage	Double 19'-6" x 20'/22'-6"



Main floor plan



Second floor plan

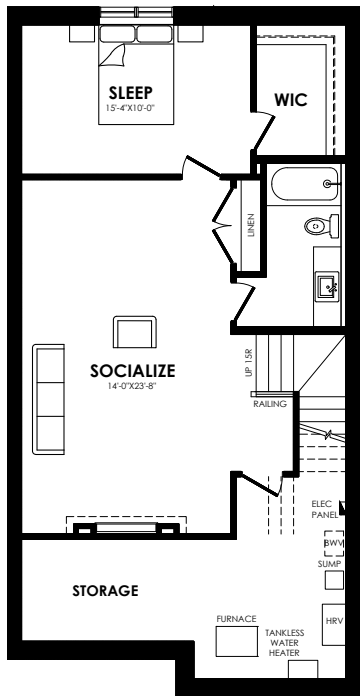
Lyra options



Craftsman Prairie Modern Contemporary

Elevation options

Square footage, layout options and window locations may change with elevation changes.



Maximum living®

you've got it so use it

Maximum living® option



Rear kitchen



Walk-thru pantry

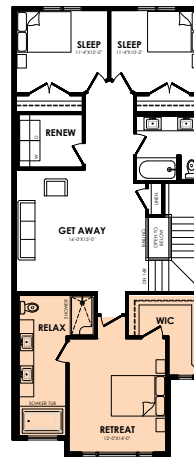


Front den

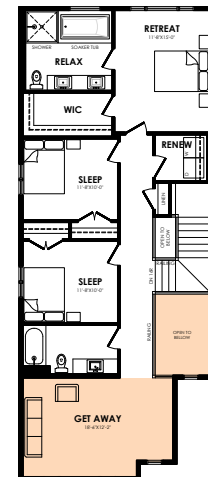


Center fireplace

Main floor options



Front master



Front bonus room open-to-below

Second floor options

Home Price
(including house, lot and GST) Lot no. _____

Please note that elevations and renderings are a guideline only. Architectural requirements or restrictions may differ per subdivision. Exterior upgrade options are available.





Shown in Contemporary elevation

Lyra

2258 sq. ft. Zero Lot Line

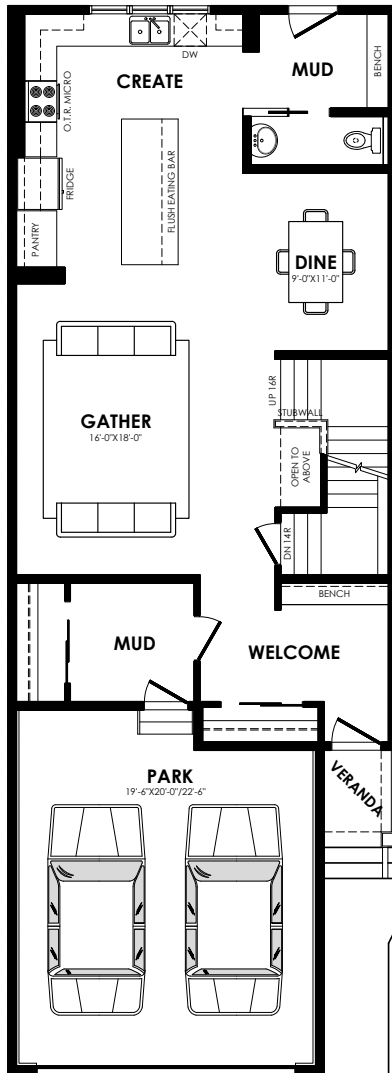
Prestige Specification

Specs

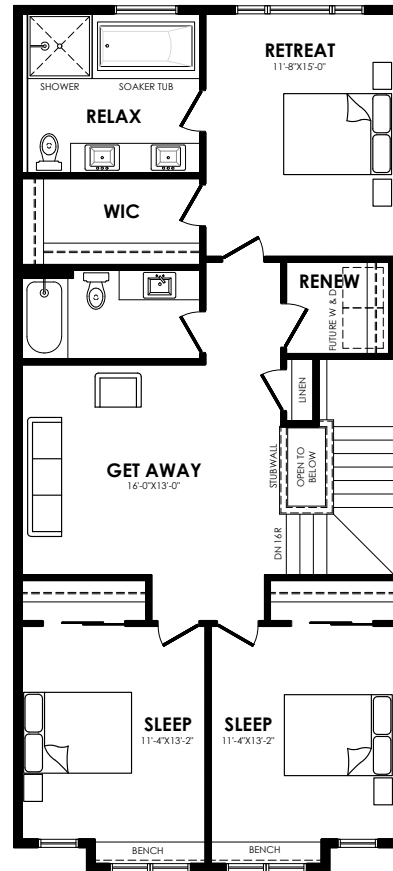
Width of House	24 ft.
Main Floor	1075 sq. ft.
Second Floor	1183 sq. ft.
Maximum Living®	757 sq. ft.

Details

Style	2 Storey Single Family
Bedrooms	3
Bathrooms	2.5
Garage	Double 19'-6" x 20'/22'-6"

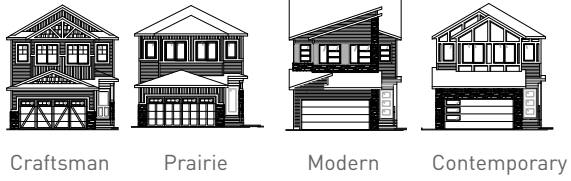


Main floor plan



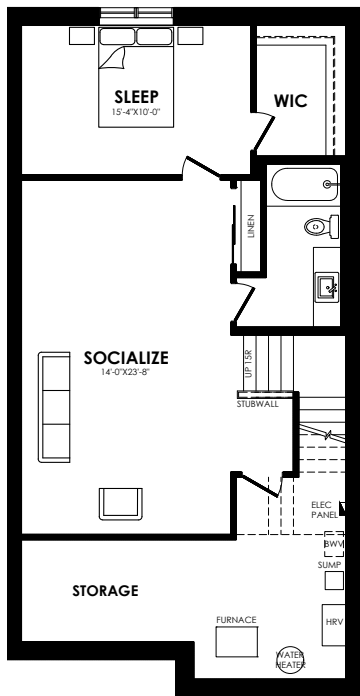
Second floor plan

Lyra options



Elevation options

Square footage, layout options and window locations may change with elevation changes.



Maximum living®

you've got it so use it

Maximum living® option



Rear kitchen



Walk-thru pantry

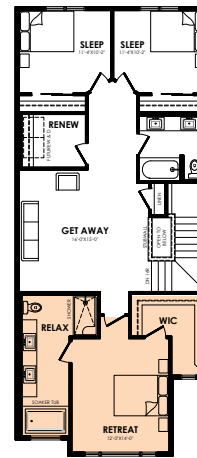


Front den

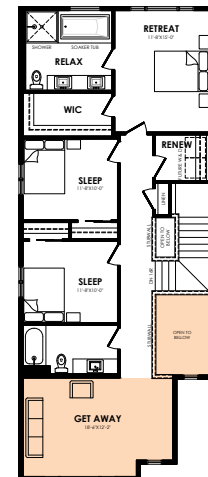


Center fireplace

Main floor option



Front master



Front bonus room open-to-below

Second floor options

Home Price

(including house, lot and GST) Lot no. _____

Please note that elevations and renderings are a guideline only. Architectural requirements or restrictions may differ per subdivision. Exterior upgrade options are available.

