



Shown in customized Standard elevation

Odessa

2354 sq. ft.

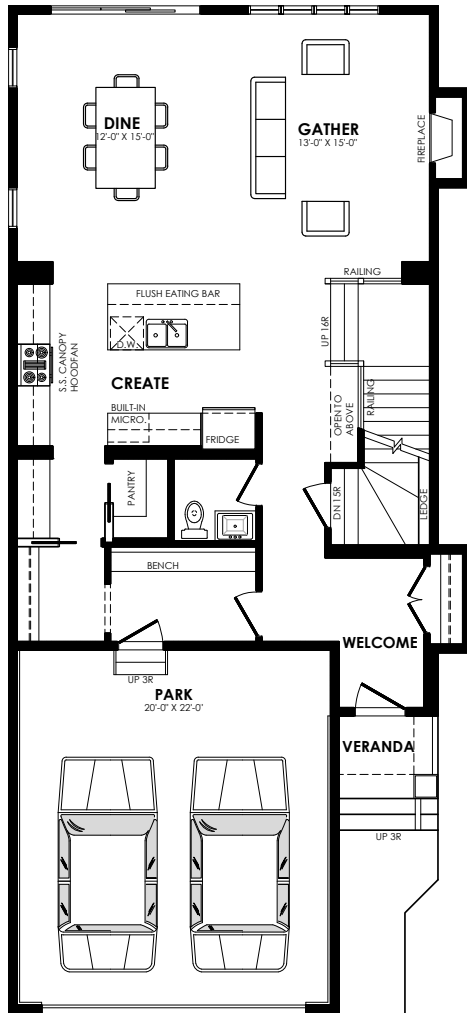
Pinnacle Specification

Specs

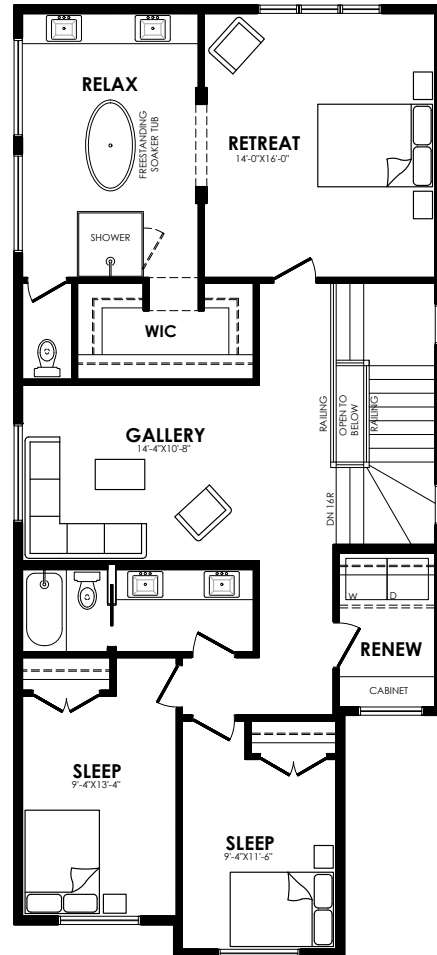
Width of House	26 ft.
Main Floor	1065 sq. ft.
Second Floor	1289 sq. ft.
Maximum Living [®]	809 sq. ft.

Details

Style	2 Storey Single Family
Bedrooms	3
Bathrooms	2.5
Garage	Double 20' x 22'

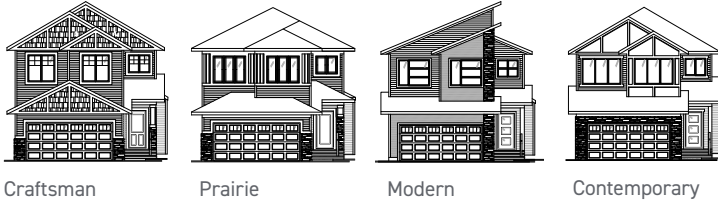


Main floor plan



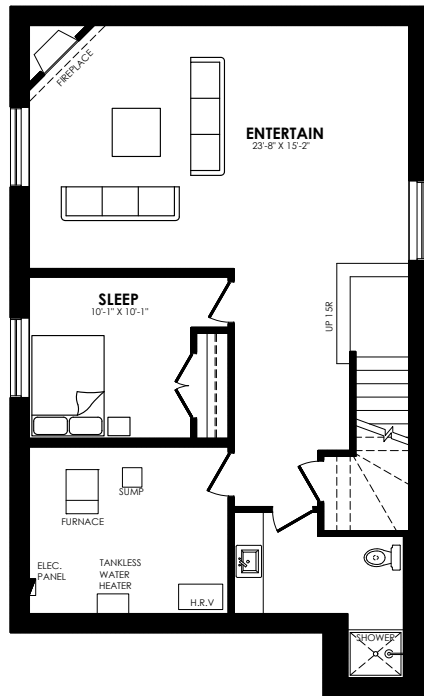
Second floor plan

Odessa options



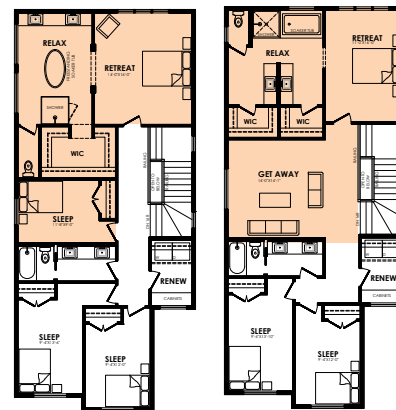
Elevation options

Square footage, layout options and window locations may change with elevation changes.



Maximum living®
you've got it so use it

Maximum living® option



4 Bedroom Option

Loft Option



Ensuite 2 and 4 Bedroom Option

Ensuite 2 and Front Bonus Room

Second floor options

Home Price
(including house, lot and GST) Lot no. _____

Please note that elevations and renderings are a guideline only. Architectural requirements or restrictions may differ per subdivision. Exterior upgrade options are available.





Shown in customized Standard elevation

Odessa

2342 sq. ft.

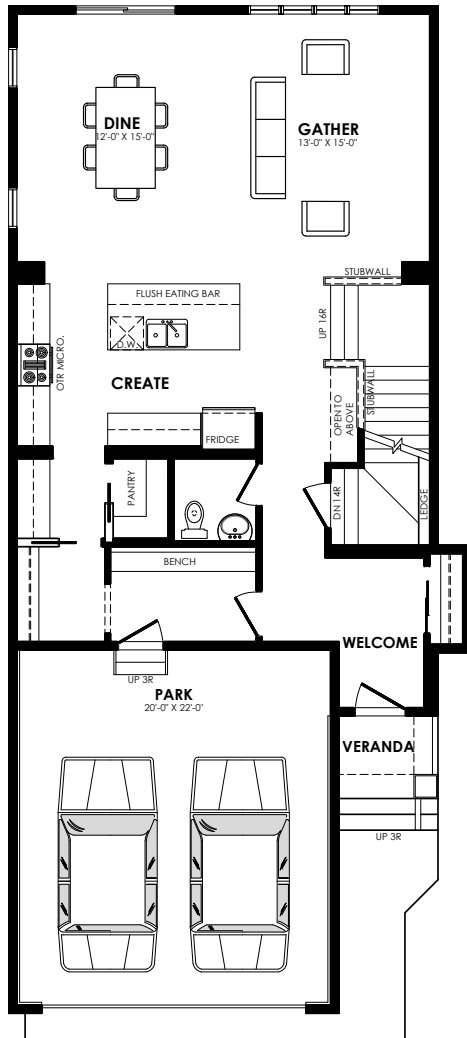
Prestige Specification

Specs

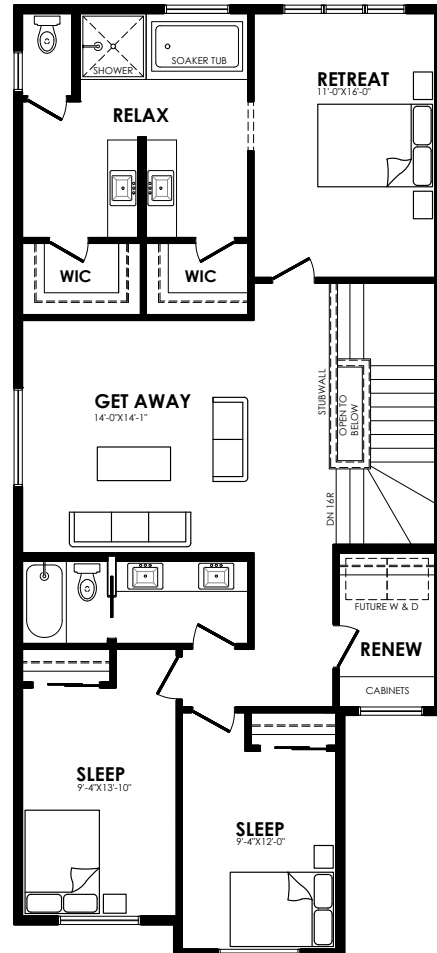
Width of House	26 ft.
Main Floor	1053 sq. ft.
Second Floor	1289 sq. ft.
Maximum Living*	809 sq. ft.

Details

Style	2 Storey Single Family
Bedrooms	3
Bathrooms	2.5
Garage	Double 20' x 22'



Main floor plan



Second floor plan

Odessa options



Craftsman



Prairie



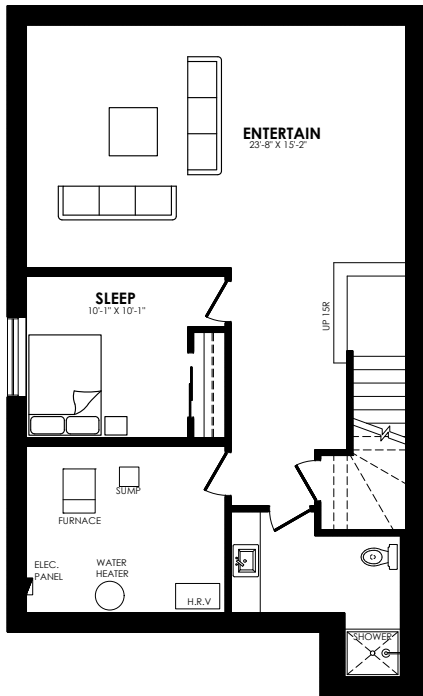
Modern



Contemporary

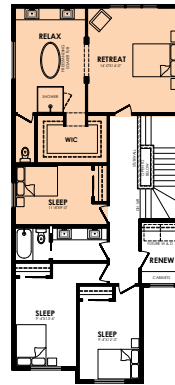
Elevation options

Square footage, layout options and window locations may change with elevation changes.

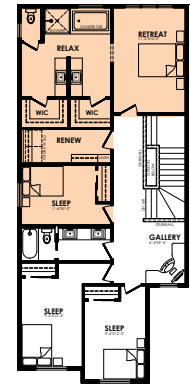


Maximum living®
you've got it so use it

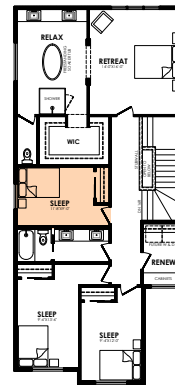
Maximum living® option



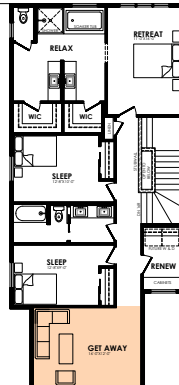
Ensuite 2 with
4 Bedroom Option



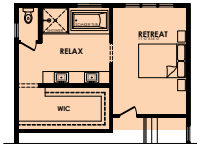
Ensuite 2 with
Loft Option



4 Bedroom Option



Front Bonus Room



Ensuite Optional Layout

Second floor options

Home Price
(including house, lot and GST) Lot no. _____

Please note that elevations and renderings are a guideline only. Architectural requirements or restrictions may differ per subdivision. Exterior upgrade options are available.

