



Shown in Showhome elevation

Kail

2320 sq. ft.

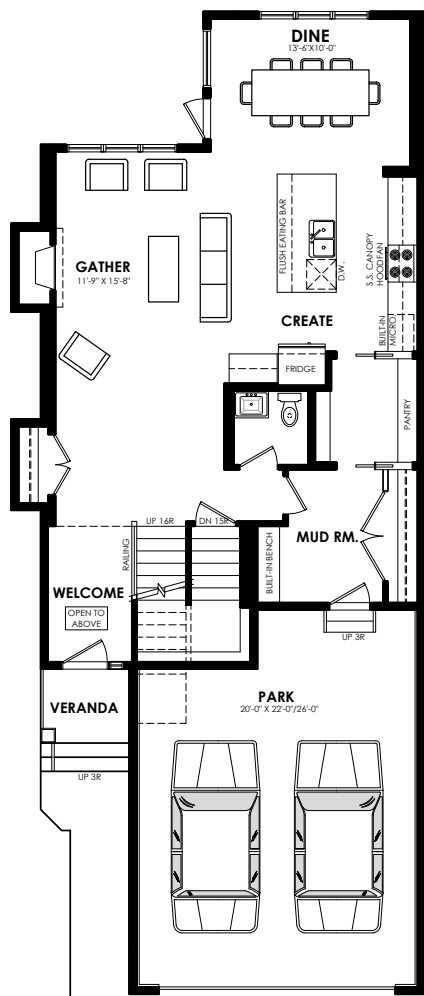
Pinnacle Specification

Specs

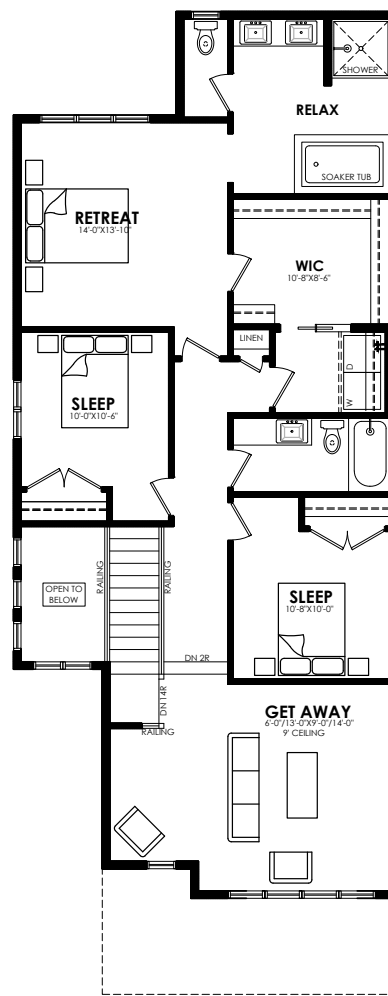
Width of House	26 ft.
Main Floor	1037 sq. ft.
Second Floor	1283 sq. ft.
Maximum Living®	819 sq. ft.

Details

Style	2 Storey Single Family
Bedrooms	3
Bathrooms	2.5
Garage	Double 20' x 22' / 26'



Main floor plan



Second floor plan

Kail options



Craftsman Prairie Modern Contemporary

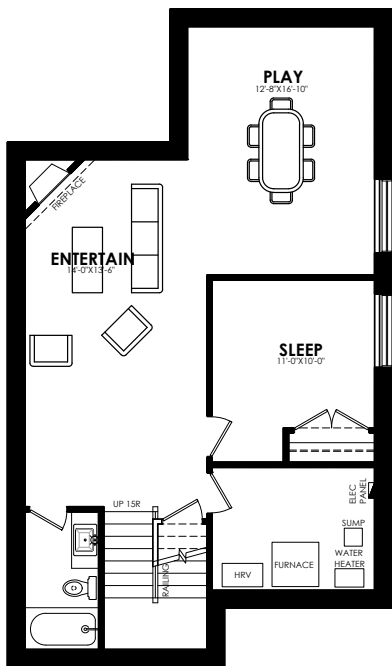
Elevation options

Square footage, layout options and window locations may change with elevation changes.



5-piece Ensuite Loft option Tech corner option 4-bedroom option

Second floor options



MaXimum living®
you've got it so use it

Maximum living® option



Alternate Main floor mud room Spice kitchen option Rear kitchen option

Main floor options

Home Price
(including house, lot and GST) Lot no. _____

Please note that elevations and renderings are a guideline only. Architectural requirements or restrictions may differ per subdivision. Exterior upgrade options are available.





Shown in Showhome elevation

Kail

2320 sq. ft.

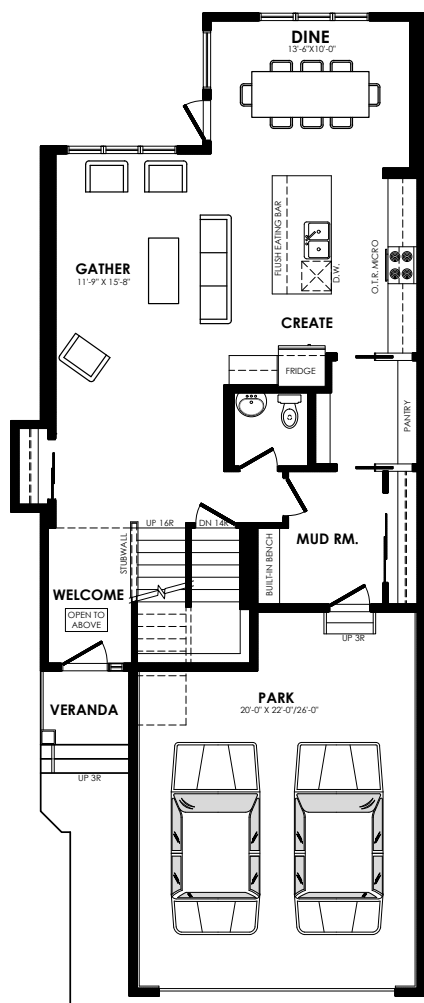
Prestige Specification

Specs

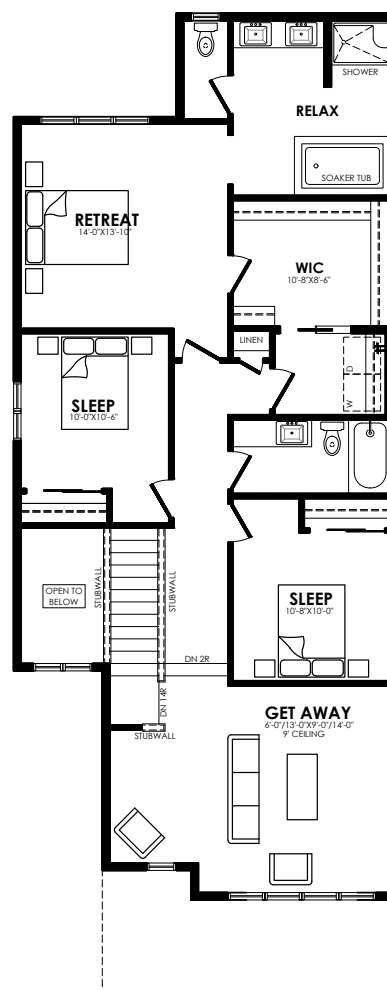
Width of House	26 ft.
Main Floor	1037 sq. ft.
Second Floor	1283 sq. ft.
Maximum Living®	819 sq. ft.

Details

Style	2 Storey Single Family
Bedrooms	3
Bathrooms	2.5
Garage	Double 20' x 22' / 26'



Main floor plan



Second floor plan

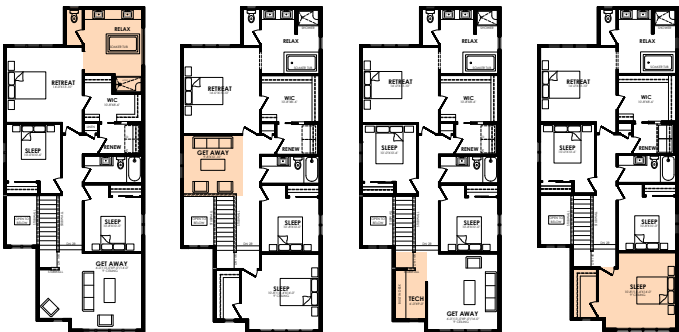
Kail options



Craftsman Prairie Modern Contemporary

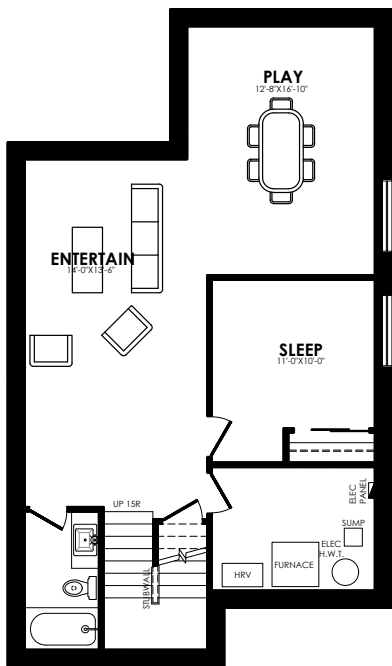
Elevation options

Square footage, layout options and window locations may change with elevation changes.



5-piece Ensuite Loft option Tech corner option 4-bedroom option

Second floor options



Maximum living®
you've got it so use it

Maximum living® option



Alternate Main floor mud room Spice kitchen option Rear kitchen option

Main floor options

Home Price

(including house, lot and GST) Lot no. _____

Please note that elevations and renderings are a guideline only. Architectural requirements or restrictions may differ per subdivision. Exterior upgrade options are available.

