



Shown in Modern elevation

# Archer

2181 sq. ft.

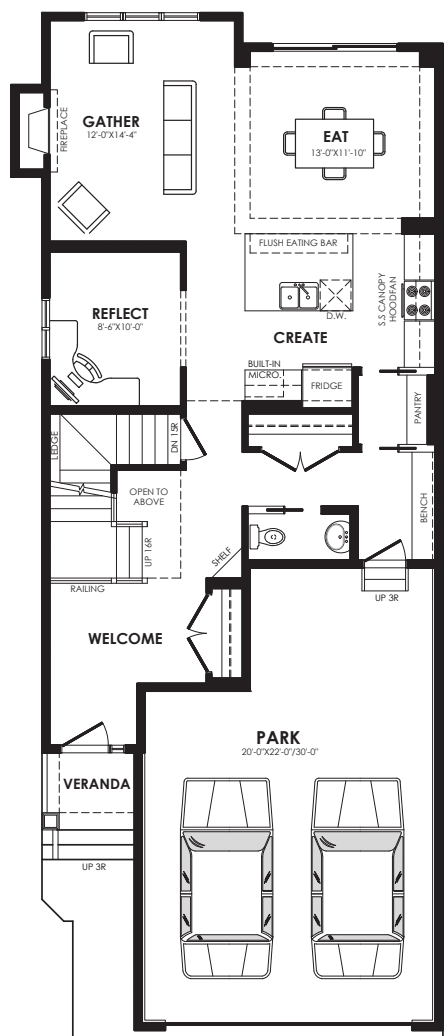
Pinnacle Specification

## Specs

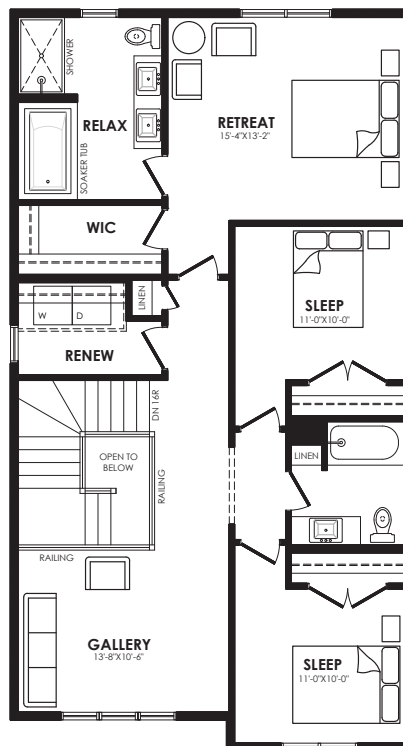
Width of House	26 ft.
Main Floor	1057 sq. ft.
Second Floor	1124 sq. ft.
Maximum Living®	865 sq. ft.

## Details

Style	2 Storey Single Family
Bedrooms	3
Bathrooms	2.5
Garage	Double 20' x 22' / 30'



Main floor plan



Second floor plan

# Archer options



Prairie



Craftsman



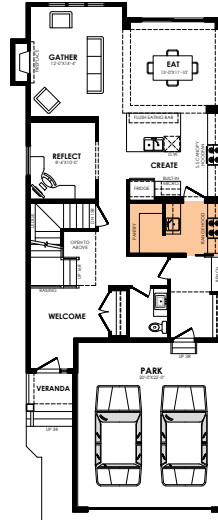
Modern



Contemporary

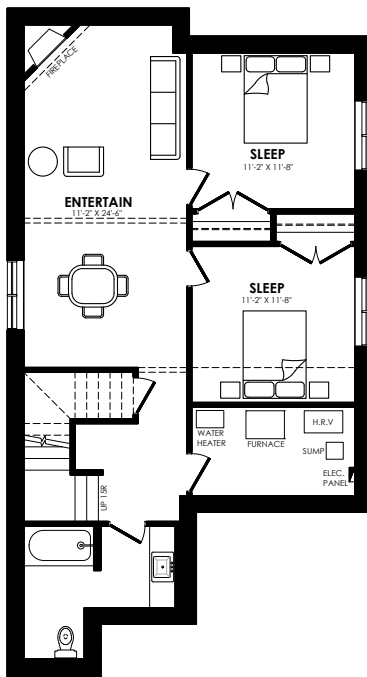
## Elevation options

Square footage, layout options and window locations may change with elevation changes.



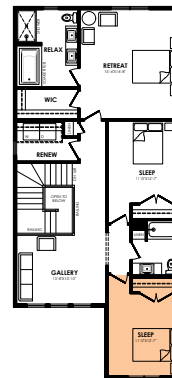
Spice kitchen

## Main floor option



**MaXimum living®**  
you've got it so use it

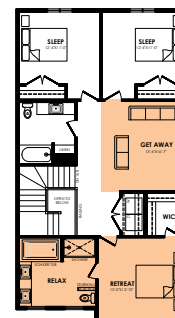
## Maximum living® option



Extended second floor



Middle bonus room



Front primary with middle bonus room

## Second floor options

### Home Price

(including house, lot and GST) Lot no. \_\_\_\_\_

Please note that elevations and renderings are a guideline only. Architectural requirements or restrictions may differ per subdivision. Exterior upgrade options are available.



2169 sq. ft.

### Prestige Specification

## Specs

Width of House	26 ft.
Main Floor	1045 sq. ft.
Second Floor	1124 sq. ft.
Maximum Living®	865 sq. ft.

## Details

Style	2 Storey Single Family
Bedrooms	3
Bathrooms	2.5
Garage	Double 20' x 22' / 30'



# Archer options



Prairie



Craftsman



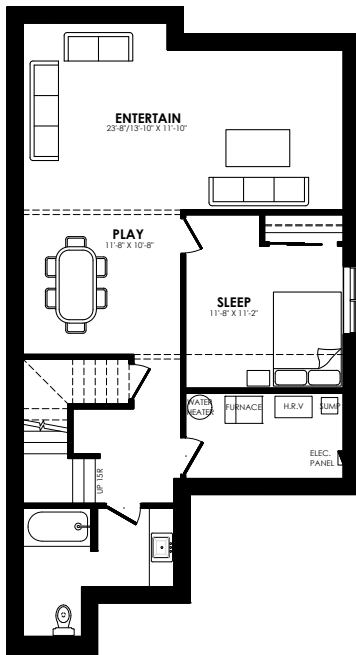
Modern



Contemporary

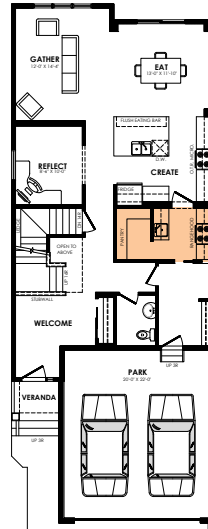
## Elevation options

Square footage, layout options and window locations may change with elevation changes.



**MaXimum living®**  
you've got it so use it

## Maximum living® option

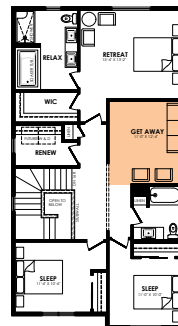


Spice kitchen

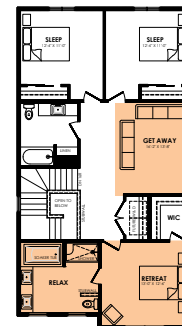
## Main floor option



Extended second floor



Middle bonus room



Front primary with middle bonus room

## Second floor options

### Home Price

(including house, lot and GST) Lot no. \_\_\_\_\_

Please note that elevations and renderings are a guideline only. Architectural requirements or restrictions may differ per subdivision. Exterior upgrade options are available.