



Shown in Modern elevation

# Dione

2103 sq. ft. Zero Lot Line

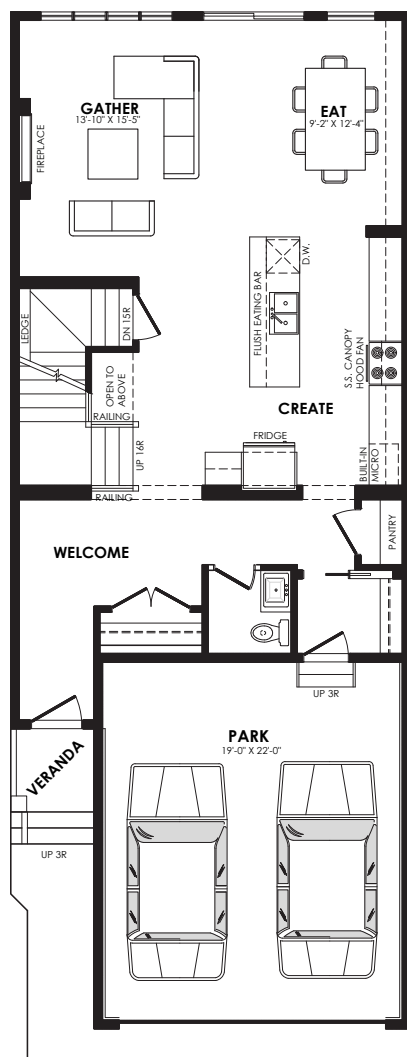
## Pinnacle Specification

### Specs

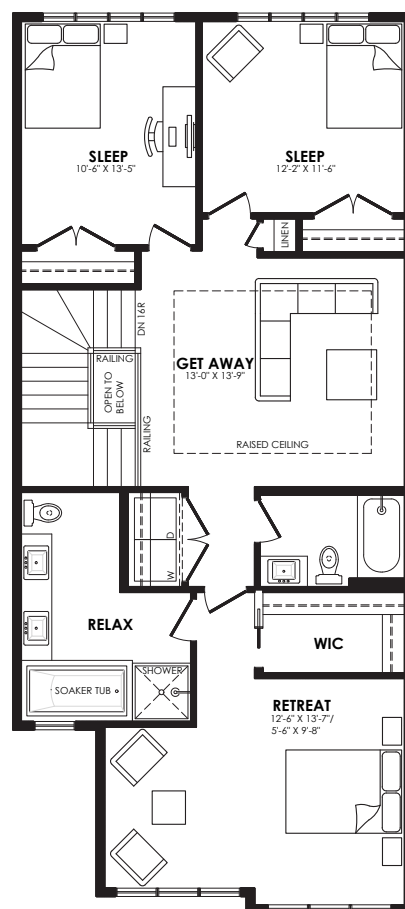
Width of House	24 ft.
Main Floor	958 sq. ft.
Second Floor	1145 sq. ft.
Maximum Living®	760 sq. ft.

### Details

Style	2 Storey Single Family
Bedrooms	3
Bathrooms	2.5
Garage	Double 19' x 22'



Main floor plan



Second floor plan

# Dione options



Prairie



Craftsman



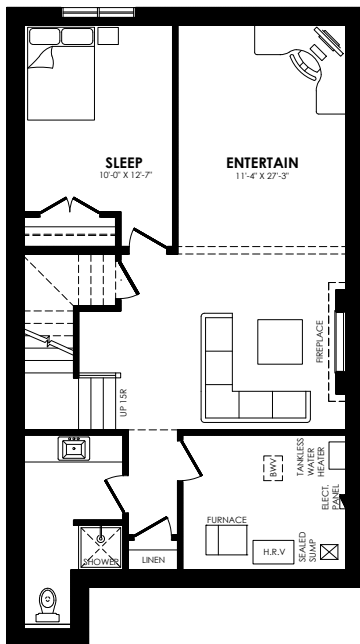
Modern



Contemporary

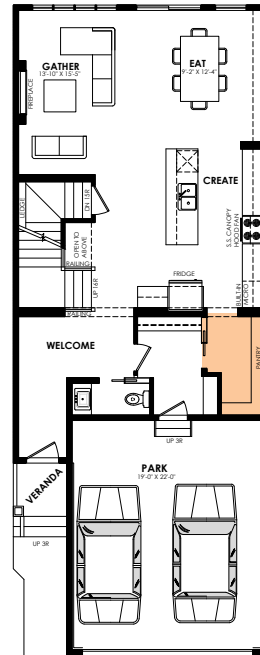
## Elevation options

Square footage, layout options and window locations may change with elevation changes.



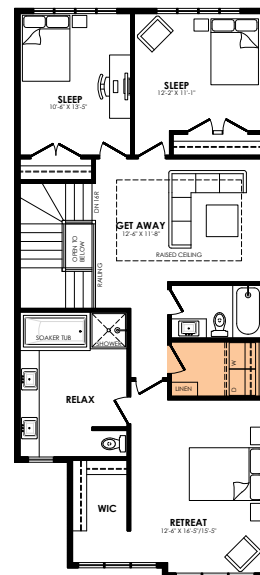
**MaXimum living®**  
you've got it so use it

## Maximum living® option



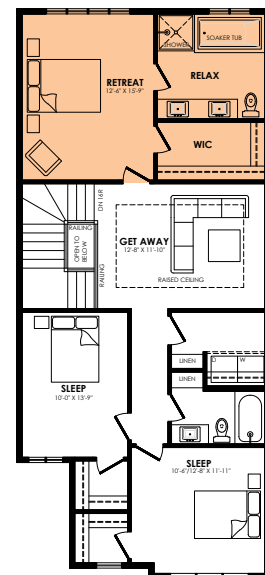
Main floor  
walk-through pantry

## Main floor option



Second floor  
laundry room

## Second floor options



Rear primary

## Home Price

(including house, lot and GST) Lot no. \_\_\_\_\_

Please note that elevations and renderings are a guideline only.  
Architectural requirements or restrictions may differ per subdivision.  
Exterior upgrade options are available.





2103 sq. ft. Zero Lot Line

## Specs

Width of House	24 ft.
Main Floor	958 sq. ft.
Second Floor	1145 sq. ft.
Maximum Living®	760 sq. ft.

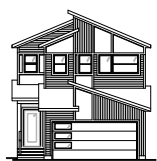
Style	2 Storey Single Family
Bedrooms	3
Bathrooms	2.5
Garage	Double 19' x 22'



# Dione options



Standard



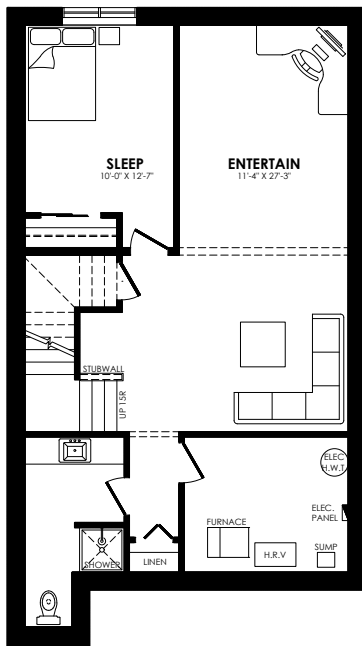
Modern



Contemporary

## Elevation options

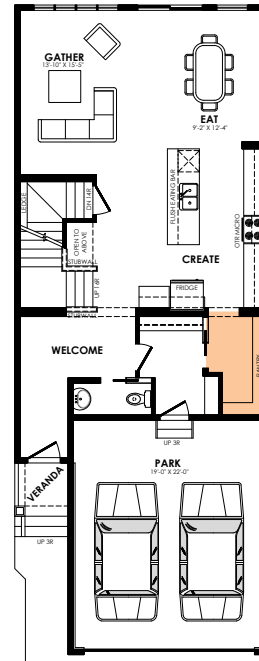
Square footage, layout options and window locations may change with elevation changes.



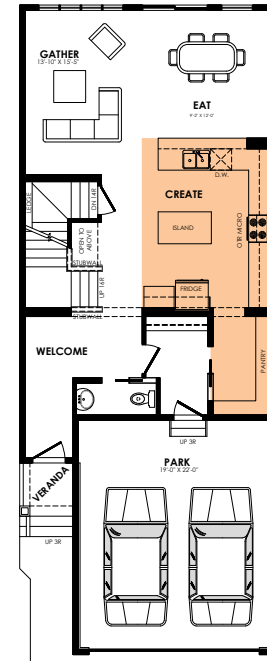
**MaXimum living®**

you've got it so use it

Maximum living® option

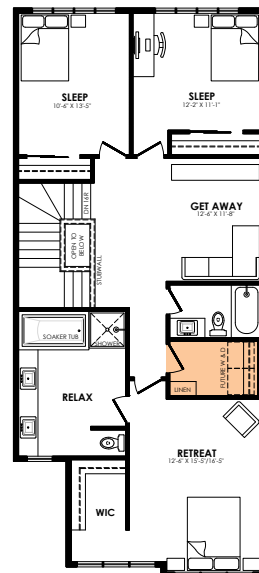


Main floor walk-through pantry

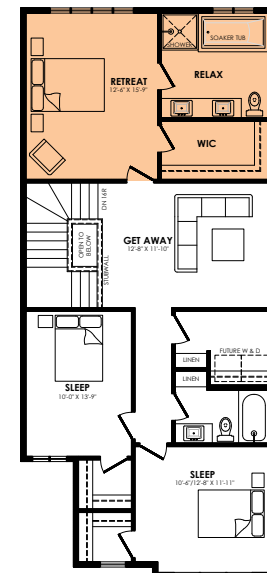


"U" Kitchen with walk-through pantry

## Main floor options



Second floor laundry room



Rear primary

## Second floor options

Home Price

(including house, lot and GST) Lot no. \_\_\_\_\_

Please note that elevations and renderings are a guideline only. Architectural requirements or restrictions may differ per subdivision. Exterior upgrade options are available.

