



Shown in Craftsman elevation

# Aquila

1807 sq. ft.

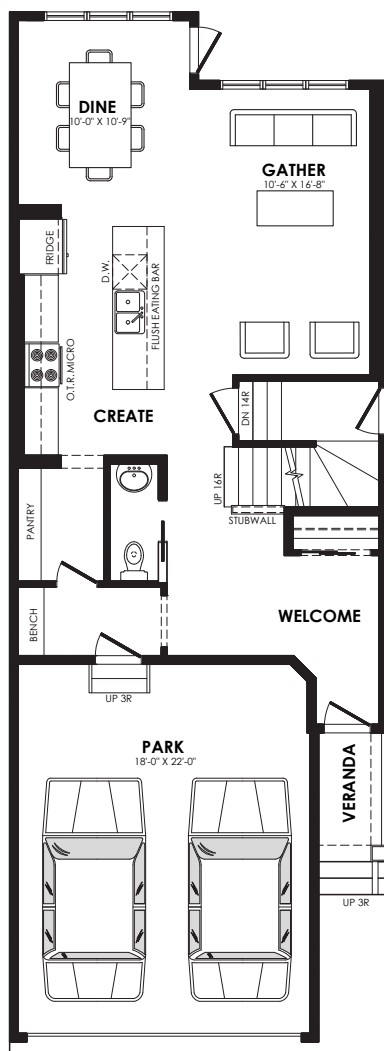
Pointe Specification

## Specs

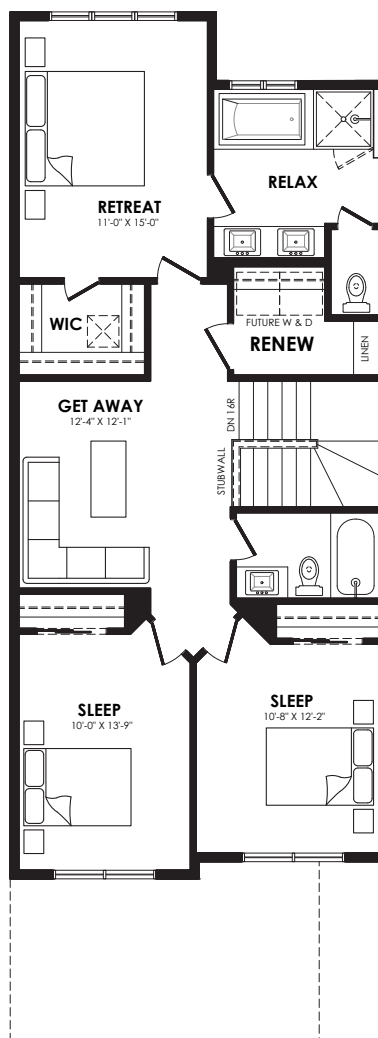
Width	22 ft.
Main Floor	811 sq. ft.
Second Floor	996 sq. ft.

## Details

Style	2 Storey Single Family
Bedrooms	3
Bathrooms	2.5
Garage	Double 18' x 22'



Main floor plan



Second floor plan

# Your Aquila

Job # \_\_\_\_\_

Notes \_\_\_\_\_

Lot \_\_\_\_\_

Price \_\_\_\_\_

Please note that elevations and renderings are a guideline only.  
Architectural requirements or restrictions may differ per subdivision.



☐ Standard



☐ Prairie



☐ Craftsman



☐ Modern Farmhouse

## Elevation

Square footage, layout options and window locations may change with elevation changes.

## Referral Program

If you encourage a friend or family member to buy a home with us, we will reward you with an industry-leading referral bonus.

## Platinum Referral

Not had the opportunity to build with us yet, but still a huge fan of our work? Referral = \$2,000!

## Diamond Referral

Currently a Coventry Homes homeowner who wants your friends and family to have the same great experience you did? Referral = \$3,000!

### ☐ Canyon



Wall Colour Trim Colour



#### Kitchen



#### Countertops



#### Bathroom



#### Flooring



### ☐ Dune



Wall Colour Trim Colour



#### Kitchen



#### Countertops



#### Bathroom



#### Flooring



### ☐ Highlands



Wall Colour Trim Colour



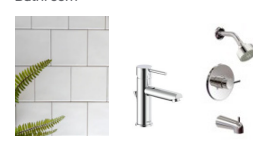
#### Kitchen



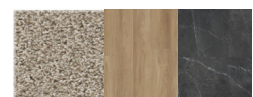
#### Countertops



#### Bathroom



#### Flooring



## Colour package

For informational purposes only; colours may not be exactly as shown. Items may be discontinued or substituted without notice.