



Shown in Craftsman elevation

# Ara

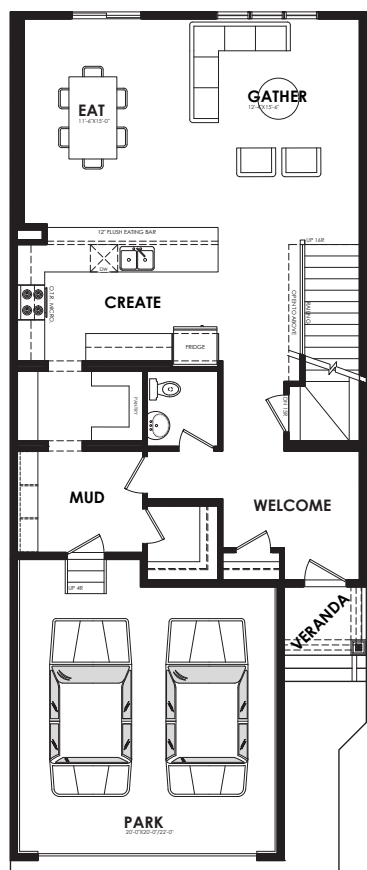
2325 sq. ft.

## Specs

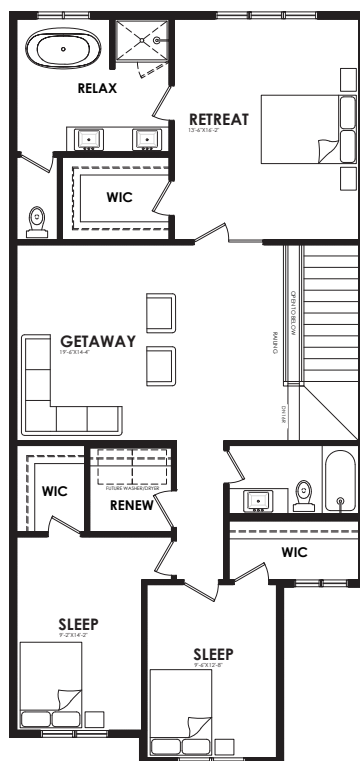
Width of House	26 ft.
Main Floor	1073 sq. ft.
Second Floor	1252 sq. ft.
Maximum Living®	896 sq. ft.

## Details

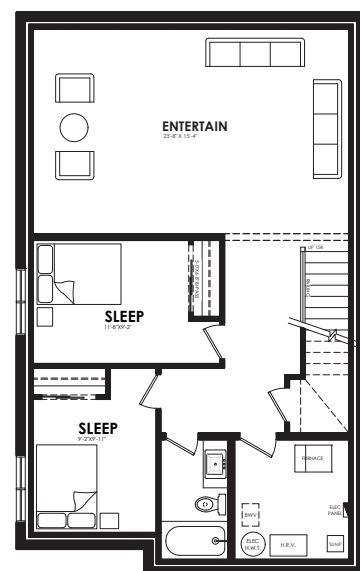
Style	2 Storey Single Family
Bedrooms	3
Bathrooms	2.5
Garage	Double 20' x 20' / 22'



Main floor plan



Second floor plan



**MaXimum living®**  
you've got it so use it

Maximum living® option

## Elevation options

Square footage, layout options and window locations may change with elevation changes.



Prairie



Craftsman



Modern



Contemporary

## Home Price

(including house, lot and GST) Lot no. \_\_\_\_\_

Please note that elevations and renderings are a guideline only. Architectural requirements or restrictions may differ per subdivision. Exterior upgrade options are available.

**50 YEARS**

**Coventry Homes**

Official Builder of the Edmonton Oilers®