



Shown in Craftsman elevation

# Cassius

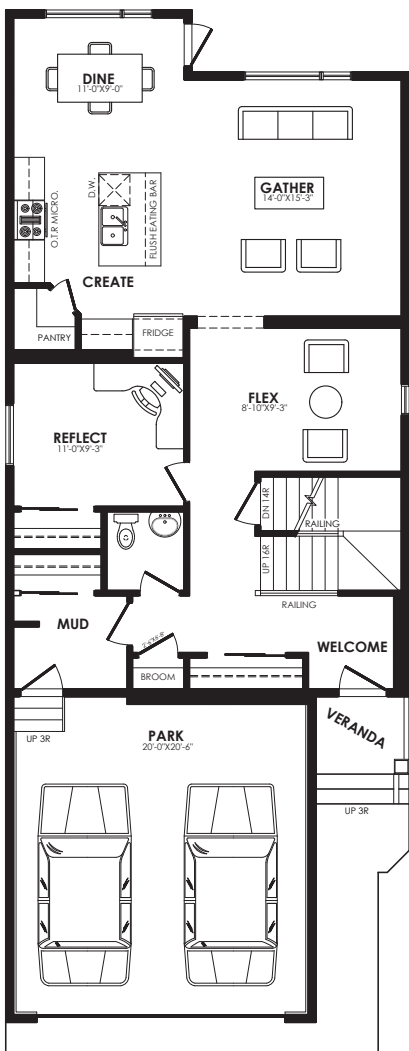
2338 sq. ft.

## Specs

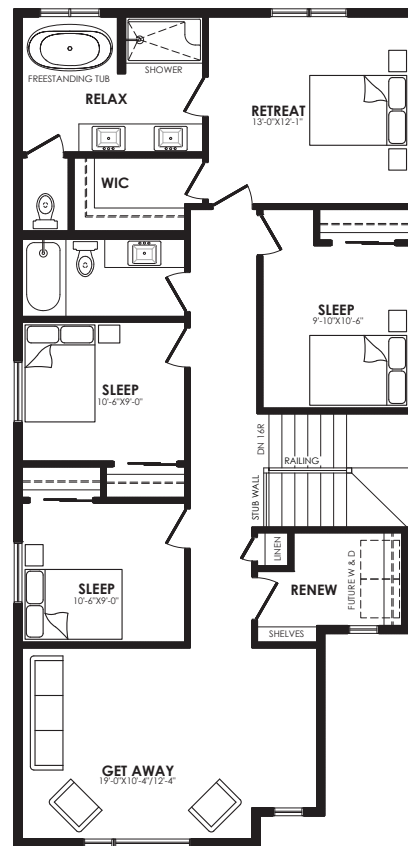
Width of House	26 ft.
Main Floor	1095 sq. ft.
Second Floor	1243 sq. ft.
Maximum Living®	852 sq. ft.
Maximum Revenue®	852 sq. ft.

## Details

Style	2 Storey Single Family
Bedrooms	4
Bathrooms	2.5
Garage	Double 20' x 20'-6"



Main floor plan



Second floor plan

# Cassius options



Prairie



Craftsman



Modern



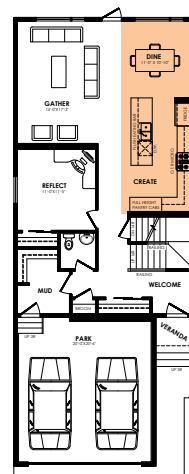
Contemporary

## Elevation options

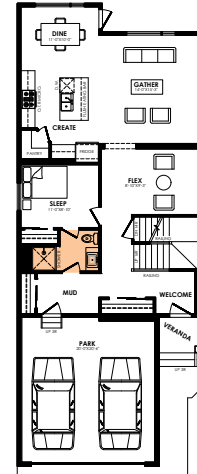
Square footage, layout options and window locations may change with elevation changes.



Spice Kitchen

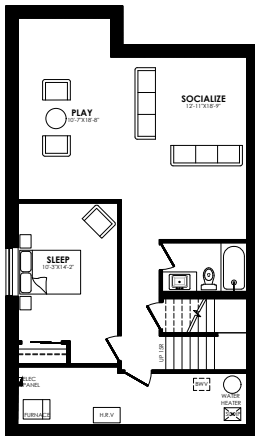


Alternative kitchen



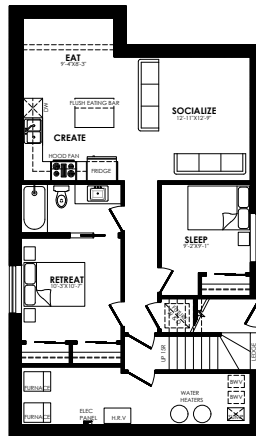
Full bath

## Main floor options



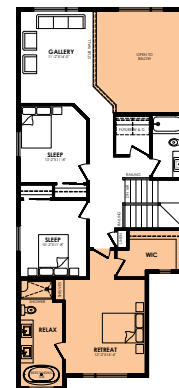
**MaXimum living®**  
you've got it so use it

Maximum living® option

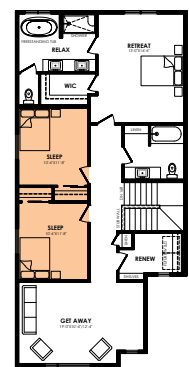


**MaXimum revenue®**  
make it work for you

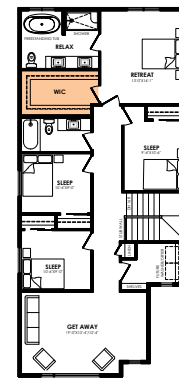
Maximum revenue® option



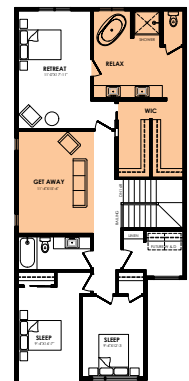
Open to below with front primary



3rd bedroom



Extended closet



Centre bonus room with alternative ensuite

Second floor options

Home Price

(including house, lot and GST) Lot no. \_\_\_\_\_

Please note that elevations and renderings are a guideline only. Architectural requirements or restrictions may differ per subdivision. Exterior upgrade options are available.