



Shown in Craftsman elevation

Celestial

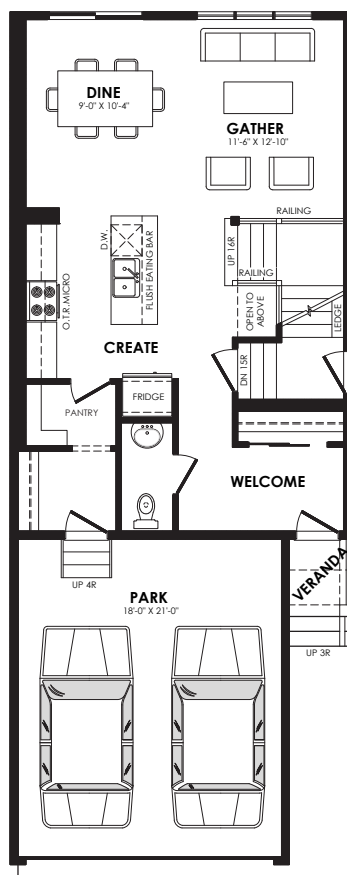
1688 sq. ft.

Specs

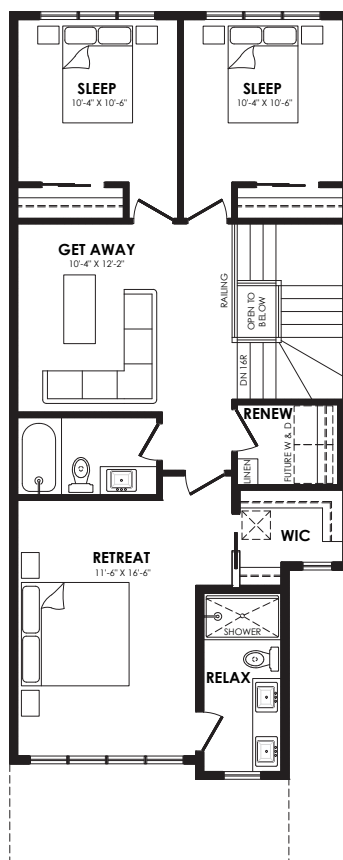
Width	22 ft.
Main Floor	748 sq. ft.
Second Floor	940 sq. ft.
Maximum Living®	513 sq. ft.

Details

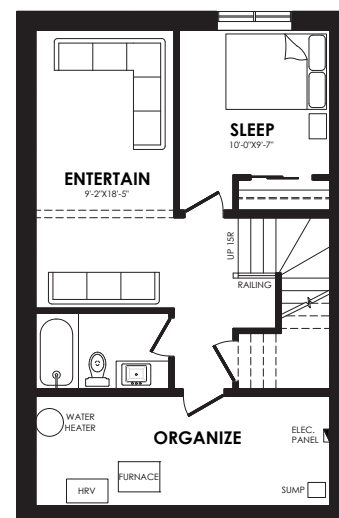
Style	2 Storey Single Family
Bedrooms	3
Bathrooms	2.5
Garage	Double 18' x 21'



Main floor plan



Second floor plan



MaXimum living®
you've got it so use it

Maximum living® option

Elevation options

Square footage, layout options and window locations may change with elevation changes.



Standard



Prairie



Modern Farmhouse



Craftsman

Home Price

(including house, lot and GST) Lot no. _____

Please note that elevations and renderings are a guideline only. Architectural requirements or restrictions may differ per subdivision. Exterior upgrade options are available.

50 YEARS

Coventry Homes

Official Builder of the Edmonton Oilers®