



Shown in Modern elevation

# Cyrus

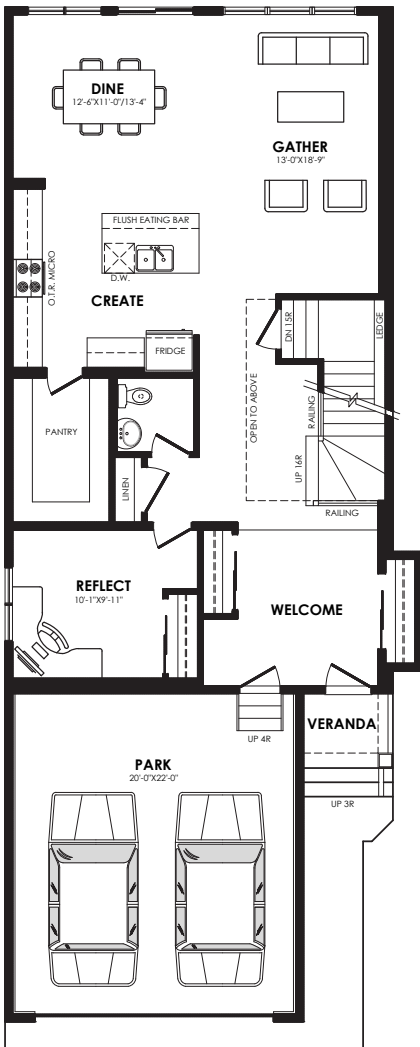
2590 sq. ft.

## Specs

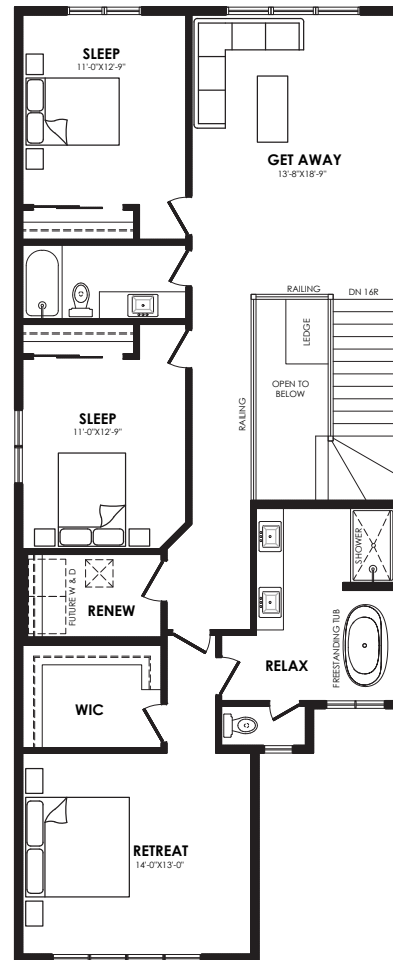
|                 |              |
|-----------------|--------------|
| Width of House  | 26 ft.       |
| Main Floor      | 1121 sq. ft. |
| Second Floor    | 1378 sq. ft. |
| Maximum Living* | 956 sq. ft.  |

## Details

|           |                        |
|-----------|------------------------|
| Style     | 2 Storey Single Family |
| Bedrooms  | 3                      |
| Bathrooms | 2.5                    |
| Garage    | Double 20' x 22'       |



Main floor plan



Second floor plan

# Cyrus options



Prairie



Craftsman



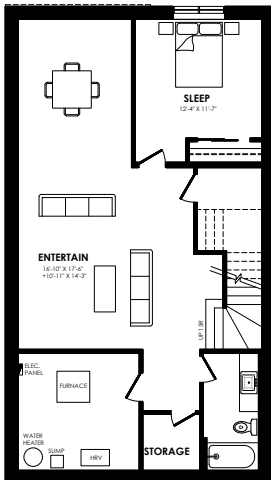
Modern



Contemporary

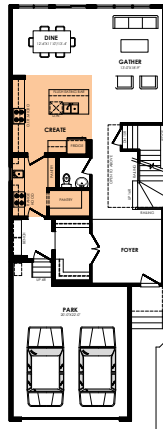
## Elevation options

Square footage, layout options and window locations may change with elevation changes.



**MaXimum living®**  
you've got it so use it

## Maximum living® options



Centre kitchen with  
spice kitchen

## Main floor option



Rear primary



Centre bonus room

## Second floor options

Home Price

(including house, lot and GST) Lot no. \_\_\_\_\_

Please note that elevations and renderings are a guideline only. Architectural requirements or restrictions may differ per subdivision. Exterior upgrade options are available.