



Kail

2301 sq. ft.

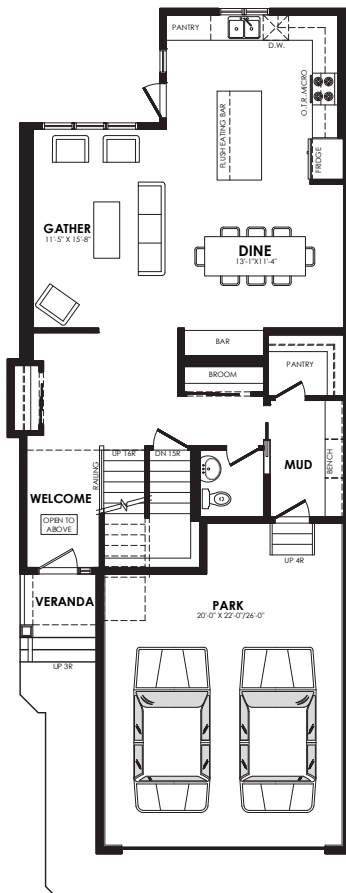
Specs

Width	26 ft.
Main Floor	1019 sq. ft.
Second Floor	1282 sq. ft.
Maximum Living®	818 sq. ft.

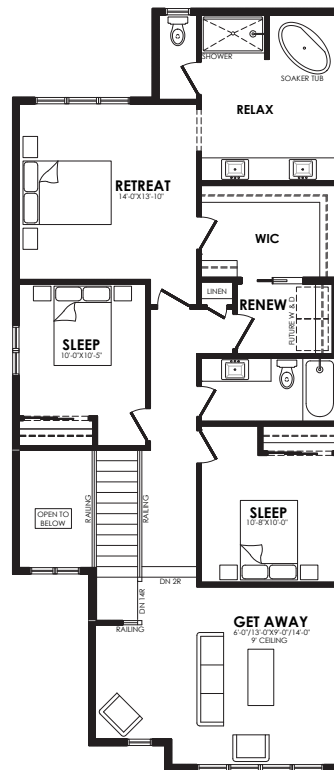
Details

Style	2 Storey Single Family
Bedrooms	3
Bathrooms	2.5
Garage	Double 20' x 22' / 26"

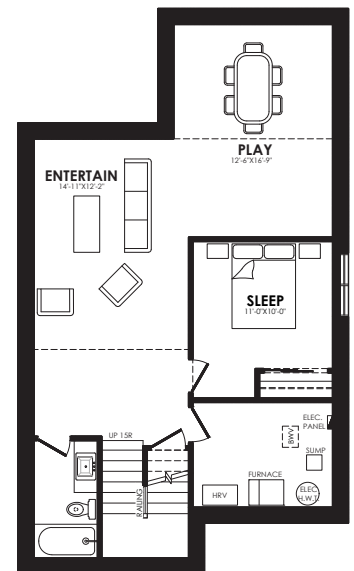
Shown in Contemporary elevation



Main floor plan



Second floor plan



MaXimum living®
you've got it so use it

Maximum living® option

Elevation options

Square footage, layout options and window locations may change with elevation changes.



Prairie



Craftsman



Modern



Contemporary

Home Price

(including house, lot and GST) Lot no. _____

Please note that elevations and renderings are a guideline only. Architectural requirements or restrictions may differ per subdivision. Exterior upgrade options are available.

50 YEARS | **Coventry Homes**

Official Builder of the Edmonton Oilers®