



Shown in Prairie elevation

Kalliope

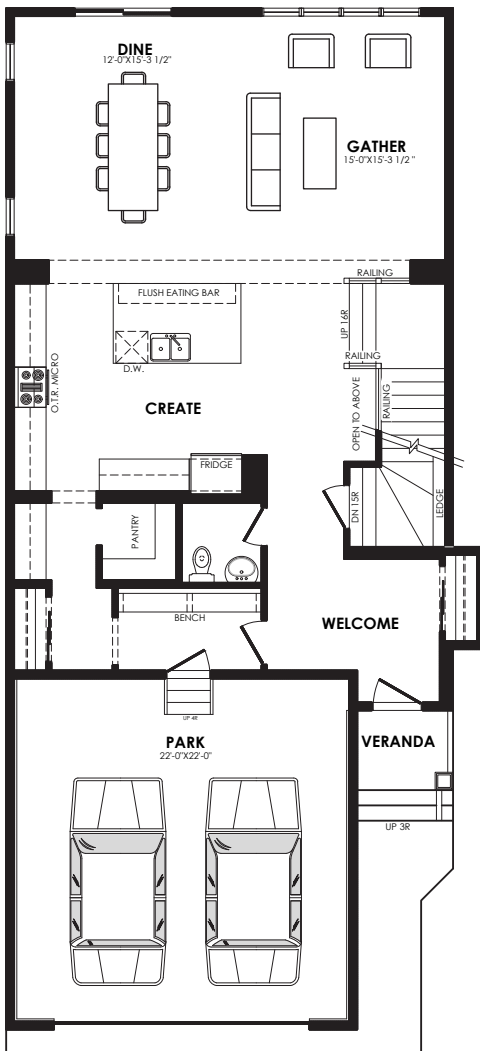
2639 sq. ft.

Specs

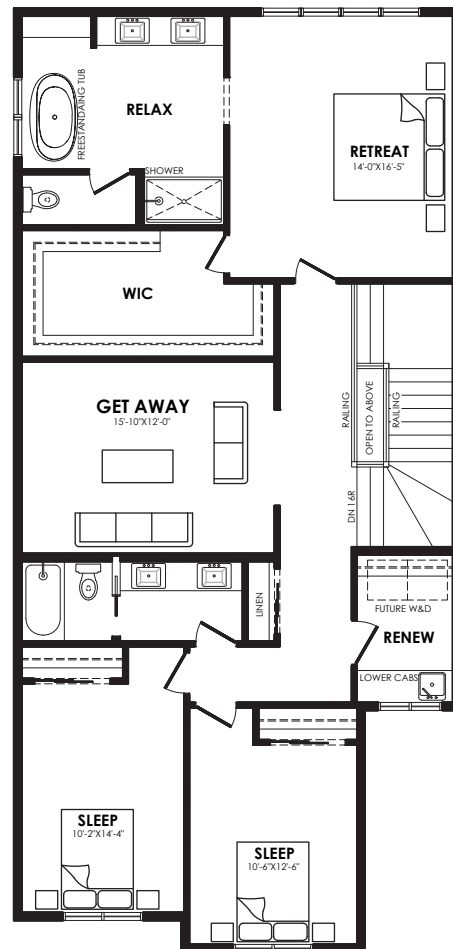
Width of House	28 ft.
Main Floor	1202 sq. ft.
Second Floor	1437 sq. ft.
Maximum Living®	929 sq. ft.

Details

Style	2 Storey Single Family
Bedrooms	4
Bathrooms	2.5
Garage	Double 20' x 20'-6"



Main floor plan



Second floor plan

Kalliope options



Standard



Prairie



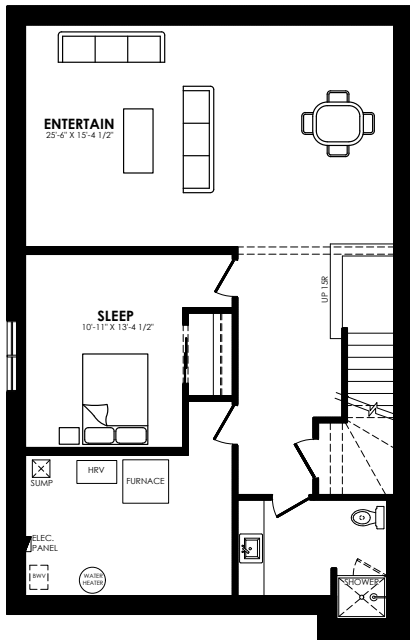
Modern



Craftsman

Elevation options

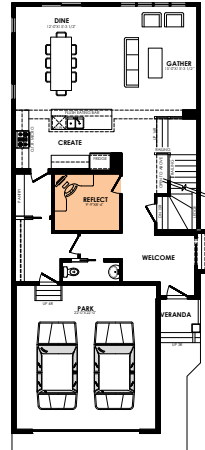
Square footage, layout options and window locations may change with elevation changes.



MaXimum living®

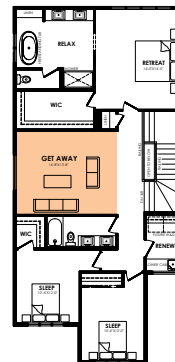
you've got it so use it

Maximum living® option

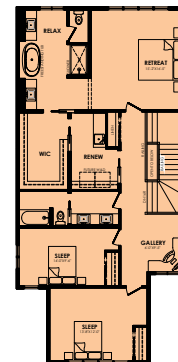


Den

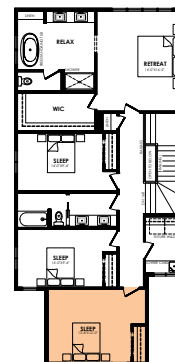
Main floor option



Centre bonus room



Alternative second floor



4th bedroom

Second floor options

Home Price

(including house, lot and GST) Lot no. _____

Please note that elevations and renderings are a guideline only. Architectural requirements or restrictions may differ per subdivision. Exterior upgrade options are available.

50 YEARS | **Coventry Homes**

Official Builder of the Edmonton Oilers®