



Shown in Contemporary elevation

# Lyra

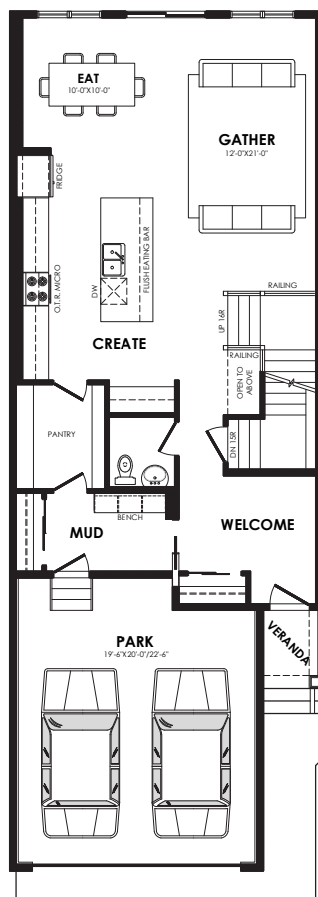
2280 sq. ft.

## Specs

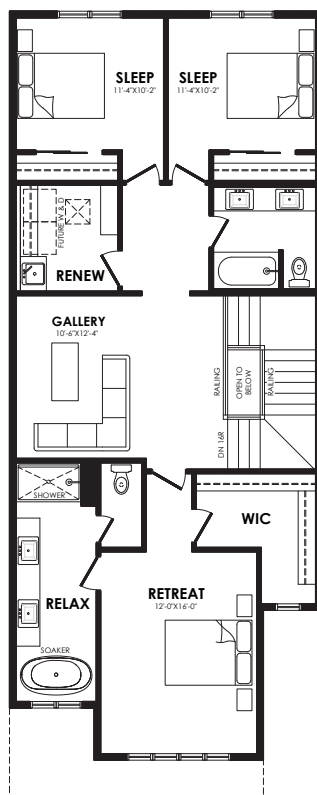
|                 |              |
|-----------------|--------------|
| Width           | 24 ft.       |
| Main Floor      | 1073 sq. ft. |
| Second Floor    | 1207 sq. ft. |
| Maximum Living® | 757 sq. ft.  |

## Details

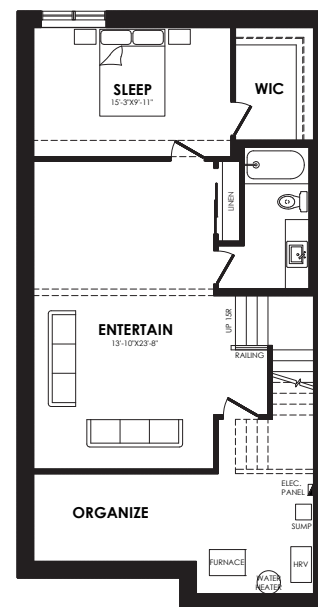
|           |                            |
|-----------|----------------------------|
| Style     | 2 Storey Single Family     |
| Bedrooms  | 3                          |
| Bathrooms | 2.5                        |
| Garage    | Double 19'-6" x 20'/22'-6" |



Main floor plan



Second floor plan



**MaXimum living®**  
you've got it so use it

Maximum living® option

## Elevation options

Square footage, layout options and window locations may change with elevation changes.



Prairie



Craftsman



Modern



Contemporary

## Home Price

(including house, lot and GST) Lot no. \_\_\_\_\_

Please note that elevations and renderings are a guideline only. Architectural requirements or restrictions may differ per subdivision. Exterior upgrade options are available.

**50 YEARS**

**Coventry Homes**

Official Builder of the Edmonton Oilers®