



Shown in customized Craftsman elevation

Pollux

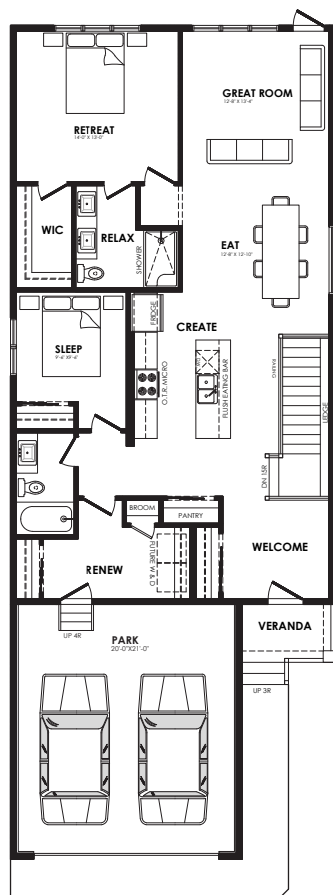
1404 sq. ft.

Specs

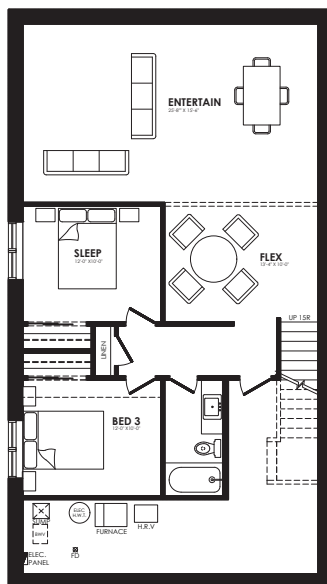
Width of House	28 ft.
Main Floor	1335 sq. ft.
Finished Stairs	69 sq. ft.
Maximum Living®	993 sq. ft.

Details

Style	Bungalow
Bedrooms	2
Bathrooms	2
Garage	Double 20' x 21



Main floor plan



MaXimum living®

you've got it so use it

Maximum living® option

Elevation options

Square footage, layout options and window locations may change with elevation changes.



Standard



Prairie



Craftsman

Home Price

(including house, lot and GST) Lot no. _____

Please note that elevations and renderings are a guideline only. Architectural requirements or restrictions may differ per subdivision. Exterior upgrade options are available.

50 YEARS

Coventry Homes

Official Builder of the Edmonton Oilers®