



Shown in Craftsman elevation

Cassius

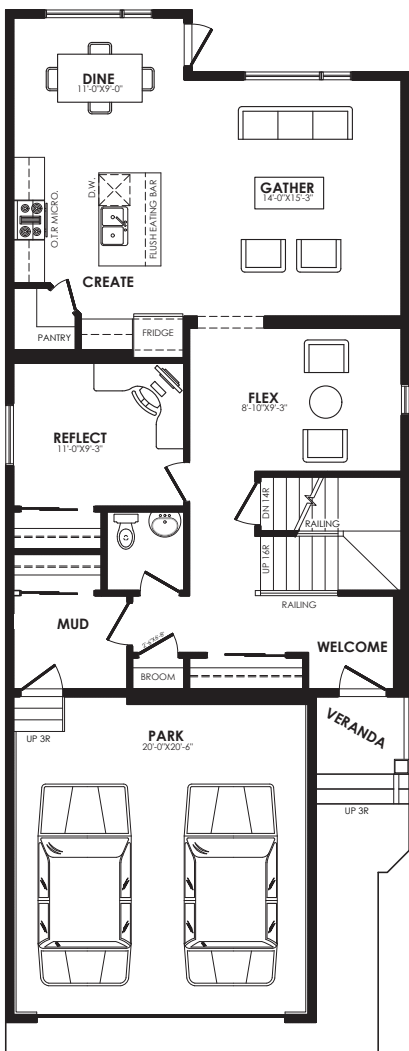
2338 sq. ft.

Specs

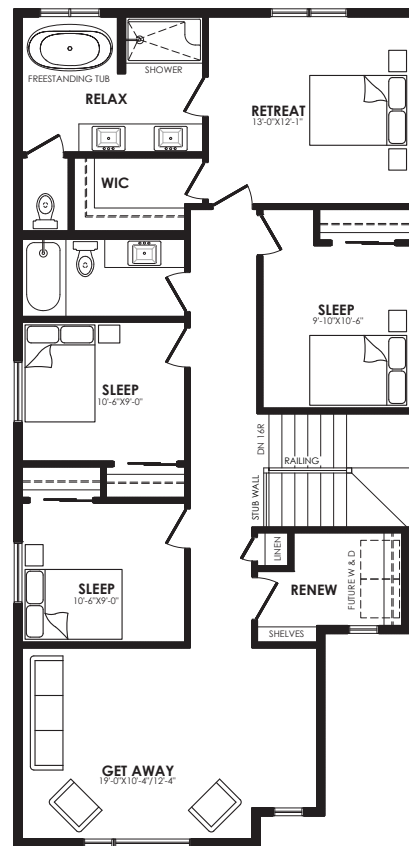
Width of House	26 ft.
Main Floor	1095 sq. ft.
Second Floor	1243 sq. ft.
Maximum Living®	852 sq. ft.
Maximum Revenue®	852 sq. ft.

Details

Style	2 Storey Single Family
Bedrooms	4
Bathrooms	2.5
Garage	Double 20' x 20'-6"



Main floor plan



Second floor plan

Cassius options



Prairie



Craftsman



Modern



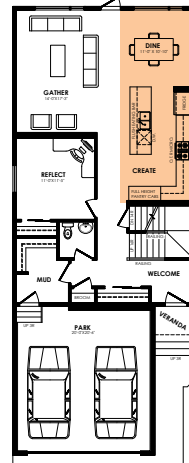
Contemporary

Elevation options

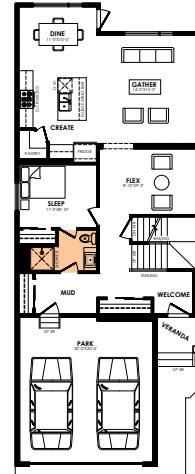
Square footage, layout options and window locations may change with elevation changes.



Spice Kitchen

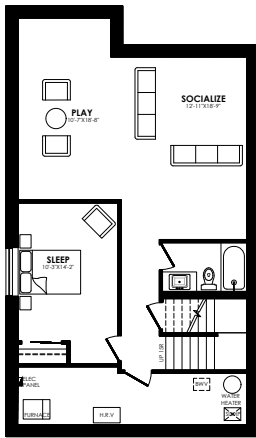


Alternative kitchen



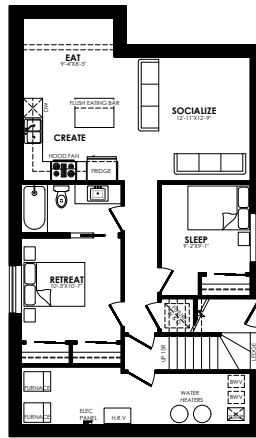
Full bath

Main floor options



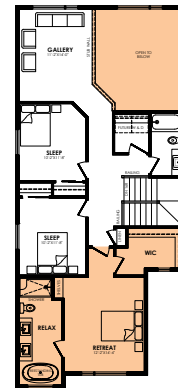
MaXimum living®
you've got it so use it

Maximum living® option

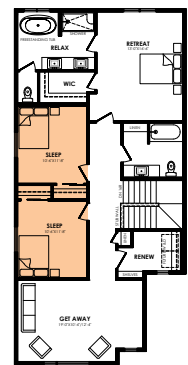


MaXimum revenue®
make it work for you

Maximum revenue® option



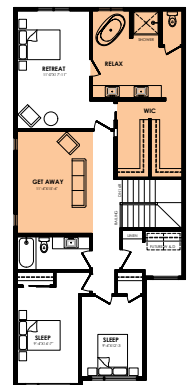
Open to below with front primary



3rd bedroom



Extended closet



Centre bonus room with alternative ensuite

Second floor options

Home Price

(including house, lot and GST) Lot no. _____

Please note that elevations and renderings are a guideline only. Architectural requirements or restrictions may differ per subdivision. Exterior upgrade options are available.