



Shown in Contemporary elevation

Nysa

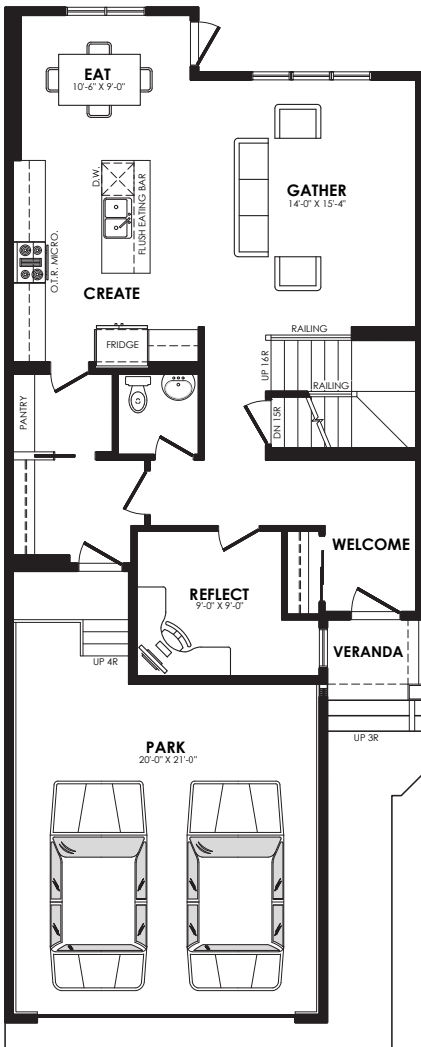
2097 sq. ft.

Specs

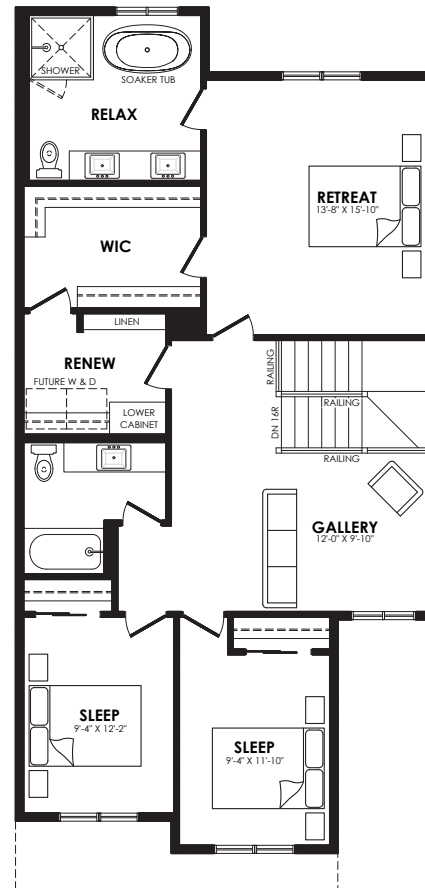
Width of House	26 ft.
Main Floor	958 sq. ft.
Second Floor	1139 sq. ft.
Maximum Living®	790 sq. ft.

Details

Style	2 Storey Single Family
Bedrooms	3
Bathrooms	2.5
Garage	Double 20' x 21'



Main floor plan



Second floor plan

Nysa options



Prairie



Craftsman



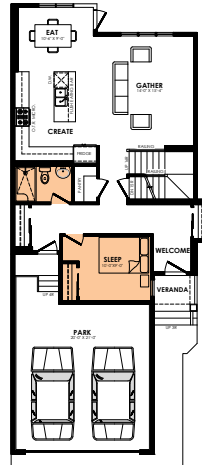
Modern



Contemporary

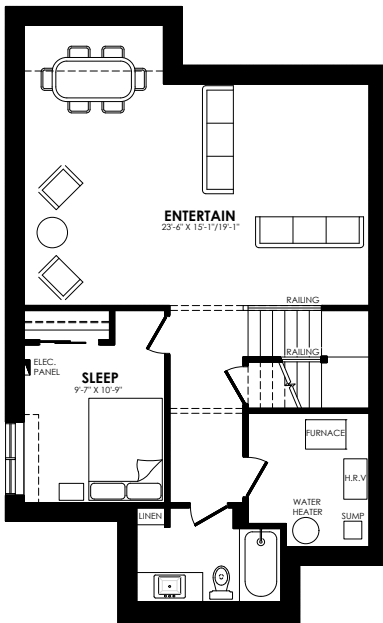
Elevation options

Square footage, layout options and window locations may change with elevation changes.



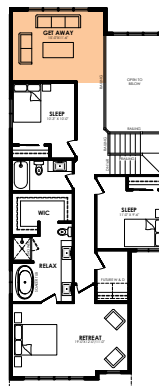
Main floor bedroom and full bath

Main floor option



MaXimum living®
you've got it so use it

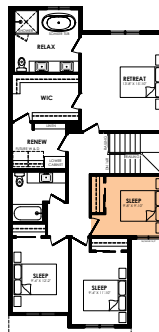
Maximum living® option



Rear bonus room open-to-below



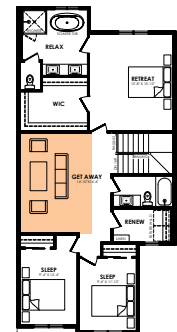
Front bonus room open-to-below



4th bedroom



Front bonus room



Centre bonus room

Second floor options

Home Price
(including house, lot and GST) Lot no. _____

Please note that elevations and renderings are a guideline only. Architectural requirements or restrictions may differ per subdivision. Exterior upgrade options are available.